



## eNewsletter: Friday 11th October 2019

### Notices to Parents and Guardians

#### Grammy Award-winning vocal group 'The Swingles' in concert at Shrewsbury School, Saturday 12th October

This Saturday evening we are thrilled to welcome back the five-time Grammy Award-winning vocal group The Swingles, who will be performing in Alington Hall at 7.30pm.

The Swingles are one of the world's foremost contemporary vocal ensembles. They'll be performing their 'Evolution' programme, which is an ideal introduction to their multi-faceted music. Ranging from iconic pieces by JS Bach to powerful original songs and live-looping experiments, their repertoire also includes beloved pop and jazz arrangements and haunting folk tunes from their International travels.

Tickets are still available from [www.ticketsource.co.uk/shrewsburyschool](http://www.ticketsource.co.uk/shrewsburyschool).

#### Global Social Leaders & Age UK Tea Party in KH, Thursday 17th October

A reminder that Shrewsbury School's Global Social Leaders group are joining forces with the Age UK Shropshire, Telford & Wrekin to organise a special Tea Party for local elderly people on Thursday 17th October. They extend a warm invitation to everyone who would like to come, so do please spread the word to anyone who you think might be interested. There is no charge, and the party takes place in Kingsland Hall from 2.30 - 4.00 pm. For more information, please see 'Forthcoming Events' below.

#### The Tucks and the House Singing Competition, Friday 18th October

Next Friday sees an exciting finale to the first half of term with two whole-school events that have long and proud traditions.

**The Tucks**  
Run every year since the early 1830s, The Tucks is one of the oldest races in the world. Last year saw a relocation to the beautiful parkland setting of Attingham Park, five miles south-east of Shrewsbury School. This provides a far better spectator experience, and parents and guardians are warmly welcomed at the event.

The race will commence at 2pm from in front of the main Mansion House, with a sweeping panoramic view of the parkland course. Please park in the main car park and enter the site through the main gates. If you have National Trust membership, please bring your card for free entry; otherwise the usual entrance fees will apply.

More details about Attingham Park, including directions and opening times of the Tea Room, can be found on their website <https://www.nationaltrust.org.uk/attingham-park>

#### House Singing Competition

The day will conclude with the hotly-anticipated House Singing Competition with all pupils involved. It is one of our most popular events of the year and, with space limited in the Alington Hall, we cannot unfortunately provide tickets to all who have applied. Priority is given to parents of leavers, new pupils and those in the Part Song groups. The Music Department will be sending emails to parents indicating whether or not they have been successful in gaining tickets.

There will be an 'overflow' venue provided in Quod for those without tickets where you will be able to watch the event through the live stream (with the added bonus of some Eurovision-style commentary!). Quod and the Alington Hall will be open from 6pm, and the SSPA will be running a bar in the marquee next to the Alington Hall. Food will also be available to purchase on the night.

For those who are unable to attend the event in person, as in previous years we will be beaming the event live around the world through the popular live stream. To access the live stream, please go to the following link: <https://www.shrewsbury.org.uk/page/house-singing-competition-2019-live-stream>.

## Latest News

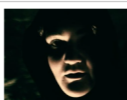


#### An impressive haul of awards for Shrewsbury Model United Nations team

Friday 11 October 2019

Shrewsbury School's Model United Nations delegates enjoyed a very successful weekend at the Cheadle Hulme MUN Conference (5th - 6th October), winning a Highly Commended Delegation Award and several individual awards.

[Read More](#)



#### "If the gods sent you to fight here, then the gods are fools..."

Thursday 10 October 2019

Thus Ed Tarling's sinister gatekeeper greeted the audience of the Lower Sixth's powerful and chilling performance of 'Electra', performed in the style of the avant-garde immersive theatre company, Punchdrunk.

[Read More](#)



#### Third Former Eleanor fences for Great Britain

Wednesday 9 October 2019

Many congratulations to Eleanor Blackledge, who competed last weekend for the GB U17 Cadet Fencing Team in Godollo, Hungary.

[Read More](#)



#### Shrewsbury Half-Marathon 2019: Team Shrewsbury School raises nearly £6,000 for charity

Wednesday 9 October 2019

Nearly 50 pupils, parents and Old Salopians took part in the Shrewsbury Half Marathon held last Sunday 6th October, between them raising almost £6,000 for the Andrew Grene Foundation and Medic Malawi.

[Read More](#)

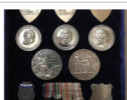


#### A fanfare launch for 'Symphonic Sundays'

Monday 7 October 2019

It was fantastic to welcome nearly 70 young musicians from Shropshire and further afield to our inaugural Symphonic Sunday on 29th September.

[Read More](#)



#### JGH Lander (OS) Olympic and WW2 medals presented to Royal Shrewsbury School Boat Club

Monday 7 October 2019

The Boat Club is greatly honoured to be presented with medals belonging to former Captain of Boats and Olympian John Lander, who joined the School in 1926. He is the only Olympic gold medallist to have been killed...

[Read More](#)

## Forthcoming Events

All these events, and many others, are listed in detail in our website [Calendar](#)

No Events added to the Newsletter.