

Shrewsbury

CO-EDUCATIONAL BOARDING & DAY SCHOOL



Information for Candidates

General Maintenance Operative (GMO)

Contents

Headmaster's Welcome	3
Welcome to Shrewsbury School	4
General Maintenance Operative	5
Job Description	6
Person Specification	9
Our Ethos	11
Academic Life at Shrewsbury	12
Pastoral Life at Shrewsbury	14
Co-Curricular Life at Shrewsbury	15
International Links	16
The Application Process	17
Contractual Terms	18
Staff Benefits	20
Recruitment Guidance Notes	21

Headmaster's Welcome

Having moved to Shropshire with my wife and young family in 2018, I can speak with first-hand experience of the warmth of welcome offered by the School community and indeed within the town of Shrewsbury. It really is a friendly, gentle yet invigorating place to live and work.

The School's 110 acres have the feel of a village gathered around a green. Stunning architecture complements the natural beauty of ancient trees and open spaces that are meticulously maintained. We wholeheartedly believe that children and staff alike respond to the inspiration of their surroundings. There can surely be fewer more uplifting places in which to live and learn. Staff morale is high and there is a shared sense of purpose which is energising. The pupils are a diverse crowd who are united by a willingness to participate and enjoy all that the School has to offer. We have an excellent staff development programme ensuring that colleagues are stimulated to keep growing as professionals.

Above all, it is a community where the individual is celebrated and encouraged to become the fullest and best version of her or himself: this goes as much for the staff as it does the children in our care.

Thank you for your interest in Shrewsbury School. I hope that this document will encourage you to go ahead with an application that may lead to your joining this unique and vibrant school community.



Welcome to Shrewsbury School

Shrewsbury School, Independent School of the Year 2020, has a world-class reputation for all-round excellence. Fully co-educational, with a seven-day boarding heartbeat and an integral day community, the School delivers a dynamic education that develops the abilities and enthusiasms of each and every pupil.

Founded by Royal Charter in 1552, Shrewsbury School is one of the 'great' nine schools in England identified by the Clarendon Commission of 1861. The School moved to its current location in 1882. Over the centuries it has grown in size and reputation. Girls first joined the Sixth Form in 2008 and it is now ranked amongst the leading co-educational boarding schools in the world, educating around 850 pupils aged 13-18 years.

Shrewsbury delivers a programme of academic learning that is exciting, challenging, responsive and versatile. On the School's breath-taking 110-acre site on the banks of the River Severn, pupils also have the opportunity to participate in a wide range of sporting, music, drama and co-curricular activities, as well as being encouraged to engage in adventure and charitable endeavour.

Shrewsbury School is committed to a seven-day full boarding model that benefits from a local day element. The School offers only one kind of boarding: full boarding, with nearly 80% of the school roll being full boarders and around 20% holding non-UK passports.

Packwood Haugh Prep School became part of the Shrewsbury family of Schools in 2019, and was joined by Terra Nova School and Prestfelde School in 2025. All are co-educational, boarding and day schools for pupils aged 3-13, affording prospective Shrewsbury School pupils a range of early entry points to the Shrewsbury family.

Shrewsbury is a registered charity with a number of wholly owned trading companies, an annual income of over £40m and a staff of over 400. It is overseen by a Governing Body which has up to 19 members. The Governing Body and its Committees meet once a term.

Recent years have seen an ambitious programme of new buildings and refurbishment projects. The fully refurbished Barnes Theatre, recently opened by Sir Michael Palin, Old Salopian, with additional new teaching facilities for Drama and Dance. The building of a fifth girls' House (Queen Elizabeth Hall) was completed and opened in September 2023, along with two new all-weather sports pitches. A full refurbishment of Rigg's Hall, one of our boys' Houses, completed in 2022, and refurbishment projects of Churchill's and Ingram's Hall completed in 2023.

General Maintenance Operative

40 Hours per week, Full-time, Permanent
Salary of £28,164.24 per annum

We wish to appoint a General Maintenance Operative to join an established team in providing first line and general site support services to the Works Department Trades and the Shrewsbury family of schools as a whole.

We are looking for a flexible individual who has the required basic skills and the right personality to get the job done. Essentially, you must have previous experience of supporting building trades, DIY skills, together with the ability to complete arduous tasks. You must hold a full driving licence, with knowledge of basic vehicle maintenance as you will be required to undertake first line assistance with the School Vehicle Fleet.

Other duties will include preventative maintenance works, Portable Appliance Testing (training will be provided, if required), recycling, collecting and delivering materials, furniture and other general maintenance tasks.

This is a full-time position based at Shrewsbury School working Monday to Friday, and Saturday mornings on a rotational basis. Please see the recruitment pack for further details on the rota.

The salary will be £28,164.24 per annum, plus generous benefits to include pension, life insurance, free school lunch when kitchens are operational, free car parking and free use of the library, swimming pool, gym, tennis courts, padel courts and squash courts.

Closing date for applications is 10:00am, Wednesday 22nd July 2026

Interviews will be held on the 28th July 2026

Shrewsbury School is committed to safeguarding and promoting the welfare of children and young people, and applicants must be willing to undergo child protection screening appropriate to the post, including checks with past employers and the Disclosure and Barring Service.

Job Description

MAIN PURPOSE OF ROLE

To provide first line and general site support services to the Estates Department trades and the schools as a whole.

LEVEL OF POSITION

The Post holder will report directly to the Maintenance Manager.

DUTIES AND RESPONSIBILITIES

The duties and responsibilities below are illustrative. The position holder will be expected to become involved in a range of work on occasions that may not be shown below. The postholder will be expected to be 'proactive' in their work and to undertake tasks within their capability that may not necessarily be listed below.

Main Responsibilities:

Maintenance

- ✦ To assist other trades in the Estates Department or other Support Departments either directly in the progress or completion of a particular task or in arranging for the delivery of materials or removal of waste etc. from the workplace.
- ✦ To undertake minor 'first line' maintenance tasks requiring only the use of simple hand or power tools and similar equipment.
- ✦ To undertake general minor response maintenance including: (this list is by no means exhaustive)
 - Small decorative repairs
 - Basic ironmongery repairs
 - Replacing ceiling tiles
 - Replacing or laying carpet tiles
 - Unblocking hand basins, WCs etc
 - Hanging curtains and blinds
 - Assembly/dismantling furniture, including minor repairs
- ✦ To carry out preventative maintenance to include: (this list is by no means exhaustive)
 - Cleaning gutters, downpipes, gulleys, hoppers and rainwater goods in general

- Water temperature testing
- Portable appliance testing
- To carry out basic routine maintenance on the waste compactor
- Overall maintenance and checks of our Outwood bound centre, Talygerwyn

General/Team Working:

- ✦ To collect & process waste and refuse across the site.
- ✦ To assist other trades with any difficulties or emergencies that may occur.
- ✦ To identify any potential building maintenance problems or hazards around the site and report them to the Maintenance Manager.
- ✦ To carry out the regular cleaning and safety checks on the School mini-bus fleet and report any defects to the Maintenance Manager.
- ✦ To collect and process waste & refuse across the site on a regular basis and as necessary to prevent any excessive accumulation.
- ✦ To process and sort waste into the correct waste streams ready for collection/disposal.
- ✦ To ensure all waste/recycling points are kept clean, tidy and presentable at all times and the School Tip area is safe and secure at all times.
- ✦ To undertake locking up duties around the site as required.
- ✦ Assist with project works when required.
- ✦ To respond to occasional “out of hours” call outs as part of a response team in the case of emergency situations. Duties involved could include:
 - General assistance in a major situation, e.g. fire
 - Clean up duties, e.g. in a flood situation
 - Driving duties: to salvage a school vehicle that has broken down etc.

Transportation:

- ✦ To collect and deliver materials, to move furniture and other general maintenance tasks etc. for official school functions and events.

- ✦ To collect and deliver for the Laundry as required and generally to assist the Laundry Staff in the handling and replacing of chemical drums, etc.

General:

- ✦ Undertake other duties which are reasonably required, and which are consistent with the general level of responsibility of this role.
- ✦ Maintain high standards, professionalism and confidentiality at all times.
- ✦ The postholder must be willing to be flexible to assist with the rapidly changing work requirements and acknowledge that duties occasionally run past the normal hours of the working day.

Contacts:

- ✦ In all contacts the successful applicant will be required to be a good ambassador for the Shrewsbury family of schools as well as maintaining constructive relationships with all.

Suitability to work with children:

- ✦ Shrewsbury School is committed to safeguarding and promoting the welfare of children and young people and expects all staff and volunteers to share this commitment.
- ✦ This successful candidate will be in regulated activity with young people and therefore, must comply with the School's Safeguarding & Child Protection policy at all times.
- ✦ The postholder must undergo Safeguarding & Child Protection training as directed by their Line Manager.
- ✦ Full safer recruitment checks will be completed on successful candidates which will include an Enhanced Disclosure & Barring (DBS) check.

Person Specification

It is anticipated that the successful candidate will demonstrate the following:

	<u>Essential</u>	<u>Desirable</u>
Qualifications:		
• Good standard of education.	✓	
• To hold a full clean driving licence with	✓	
• D1 entitlement (or willing to achieve D1 within 6 months of starting role)		✓
• To hold suitable qualifications for the erection of mobile tower scaffolds and also for the operation of powered hydraulic access equipment. (Training will be provided within first six months)		✓
• A basic health and safety certificate would be an advantage.		✓
Work Experience:		
• Must have previously worked in a similar environment supporting building trades.		✓
• To have a working knowledge of basic 'DIY' skills together with the ability to complete arduous tasks.	✓	
• Must be able to respond positively to change, and to implement changes where appropriate.	✓	
• Keen eye for detail and high expectations of the appearance and upkeep of buildings and grounds.	✓	
• Ability to recognise hazardous situations/materials and respond accordingly.	✓	
• Able to complete tasks to satisfactory conclusion.	✓	

Personal Attributes:

- Ability to work within a team and on own initiative. ✓
- Must be reliable and a good timekeeper. ✓
- Excellent verbal communication skills. ✓
- Ability to work on own initiative. ✓
- Flexible approach to working hours. ✓

Specialist Knowledge:

- Knowledge of relevant legislation such as Health and Safety, Building Regulations, Asbestos Regulations etc. ✓
- Must be able to operate powered hydraulic access equipment. ✓
- Experience and knowledge of basic vehicle maintenance. ✓

Other/Special Working Conditions:

- Some out of hours and weekend work will be required. Therefore, the successful applicant must be willing to work additional hours to suit the business needs of the school. ✓
- Must be willing to undergo further training to gain the appropriate qualifications detailed in this document or other relevant courses as deemed suitable by the Property Surveyor. ✓

Our Ethos

Shrewsbury School has a strong vision, derived from our position as a major co-educational boarding and day school of international reputation.

A Shrewsbury education will educate and empower each individual pupil to flourish in life and contribute positively to the world around them.

Shrewsbury offers a unique whole person education – Floreat – that fosters learning and personal development in four vital and mutually reinforcing fields: the intellectual; the active; the expressive and the reflective. Through this distinctive model of education Shrewsbury promotes the Six Salopian Virtues: wisdom; kindness; courage; integrity; self-mastery and spirit.

As a learning community, the School pursues academic knowledge, wisdom and truth with the aim of developing the ‘cultural capital’ of each child and instilling character strengths, aptitudes and vital life skills, such as resilience and resourcefulness. The individual is able to flourish whilst also pursuing communal values, social responsibility and a willingness to contribute positively to the wider world.

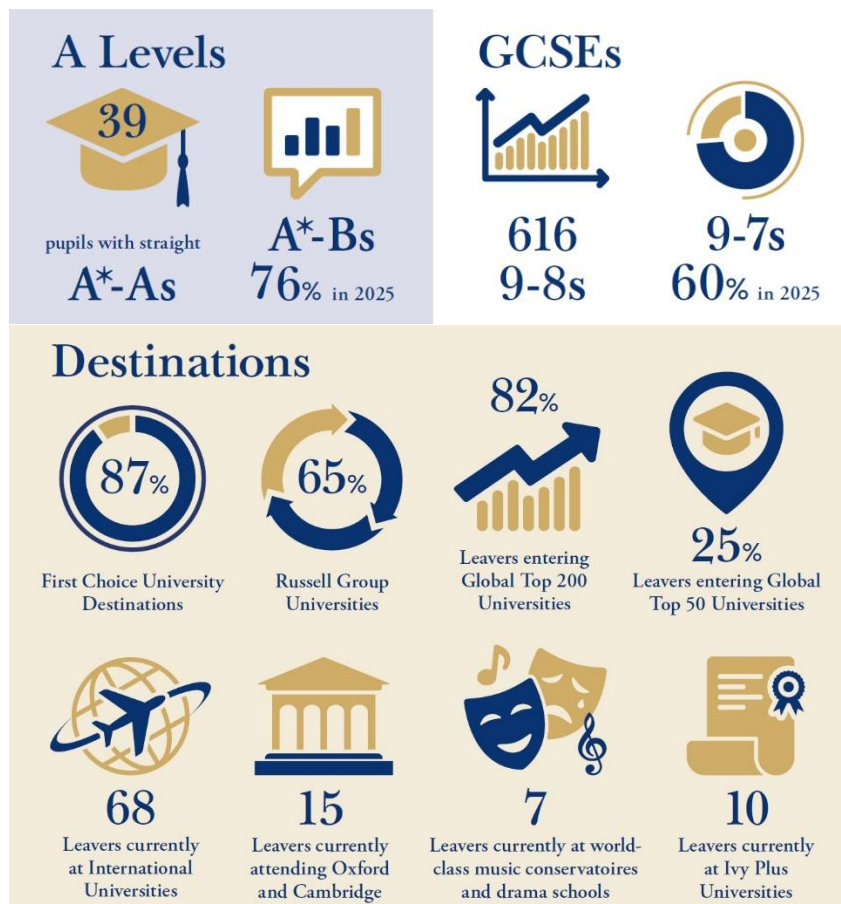
More information about Shrewsbury’s Ethos and Educational Philosophy can be found [here](#).



Academic Life at Shrewsbury

Academic life focuses on developing intellectually curious young adults who are able to think critically and creatively, have the confidence to question and to challenge and are equipped with the skills that they will need to thrive at all stages of life.

In recent years, around 5% of our leavers have gone on to Oxford and Cambridge and virtually all have taken up places at the university of their first choice. We expect about 80% of A Levels each year to be passed at A*, A or B grade. But there is as much joy for pupils who surpass his or her expectations as there is for the pupil whose progress to top grades always seemed more certain. Our Summer 2025 results and destinations are summarised below.



2025 Public Examination Results at Shrewsbury

Support Staff at Shrewsbury

Support staff provide management and operational support, in various careers, to ensure that the Schools in our family function effectively and are able to deliver an exceptional level of whole person education to our pupils.

Whether this is maintaining our grounds, the upkeep of our estate, managing our finances, supporting and developing our staff, ensuring our classrooms and houses are clean and safe; our staff are always supporting our pupils and parents in whatever way they can and they are incredibly passionate and proud of the work they do.

Shrewsbury delights in the uniqueness of its education; a blend of values, traditions, and inspiring people. Our staff are our greatest asset with both teaching and operational staff inspiring our pupils through their dedicated professional support.



The Bursary, Kingsland House

Pastoral Life at Shrewsbury

The unique, friendly yet respectful atmosphere between staff and students plays a crucial part in establishing the character of Salopians and the School. Together we are a highly supportive community. The House system (7 boys' Houses and 5 girls' Houses) is at the heart of Shrewsbury School.

The House is a Salopian's centre of gravity, a real home from home, somewhere to relax and make friends, as well as work. In addition to their Housemaster or Housemistress, each pupil has a personal tutor who is also attached to the House and will be involved in a duty evening plus helping out with house events and trips.



Co-Curricular Life at Shrewsbury

We want all our pupils, whatever their ability, to enjoy their life beyond the classroom, and Shrewsbury has a well-earned reputation for artistic, musical and sporting excellence.

We compete internationally in cricket and rowing, and we are one of the strongest schools in the country for football, cross-country running and fives. Facilities and coaching for these - and a host of other sports including badminton, basketball, tennis, fencing, lacrosse, hockey, netball, and rugby - are excellent.

Our school plays and musicals have drawn praise at the Edinburgh Fringe Festival and in London. As one would expect from one of the strongest music departments in the country, the breadth and quality of music making is remarkable, and a number of pupils win places at some of the top music colleges each year.

We also offer our pupils an extraordinary array of clubs, societies and other co-curricular activities, many of which take place on a dedicated weekly activity afternoon. The majority are led by members of school staff.

Shrewsbury is surrounded by glorious unspoiled countryside and the School makes the most of its easy access to the Shropshire Hills, the Welsh Marches and Snowdonia, as well as easy access to Birmingham and Manchester.



International Links

At Shrewsbury School we delight in playing our part in developing outstanding schools around the world. Our first international school opened in Bangkok back in 2003 and has become the benchmark for quality education in the city and the wider region.

So successful has the venture been that we opened a second campus in Bangkok in 2018 to keep up with demand, while at the same time opening a new school in Hong Kong. In 2021, Shrewsbury signed an agreement for a new premium international school launched in Phnom Penh, Cambodia and in 2025 Shrewsbury International School India opened. Plans are afoot to open further international schools in the coming years.

The Shrewsbury family of Schools share commitment to encouraging intellectual curiosity and respecting diversity and have formed a close and effective partnership over the years. We exchange best practice and perspectives from our own operating contexts via regular staff visits and via Governors who sit on the Boards of the international schools. Over the years Shrewsbury UK graduates have visited Bangkok to enjoy gap year opportunities there.



The Application Process

Please complete the Shrewsbury School application form together with a covering letter.

Please submit your completed application form and covering letter via the link embedded in the relevant job advert on our website, which can be found via the following link:

[Job Vacancies | Shrewsbury School](#)

Alternatively, you may prefer to send a printed copy, addressed to: The Human Resources Department, Kingsland House, Shrewsbury, Shropshire, SY3 7BB.

The closing date for applications is 10:00am, Wednesday 22nd July 2026

Short-listed candidates will be invited to interview on the 28th July 2026

Start date: As soon as possible

Offers will be given verbally and in writing as soon as possible following the interview.

The School reserves the right to appoint at any stage of the recruitment process.

Queries regarding the application process should be addressed to: recruitment@shrewsbury.org.uk or telephone 01743 250834.

Please note the Recruitment Guidance Notes on page 21.



Contractual Terms

Salary

The salary will be up to £28,164.24 per annum, and this will be dependent upon qualifications and experience.

There may be occasions when you will be called out to deal with an emergency outside normal working hours. In that event you will receive £25 for each call-out, in addition to the hours worked which will be paid at double time. In the event that you are required to undertake driving duties outside your normal shift pattern (e.g. extra-curricular etc.), a separate, flat hourly rate of pay will be paid.

Hours

This position is a full-time role working 40 hours per week, during term-time and during school holidays. To provide increased cover for the School, the General Maintenance Operative will be required to work a shift pattern, and also work on a rotational basis on Saturday mornings, in term-time, which is paid within the annual salary.

Saturday working hours will be from 7am to 12pm (no breaks) on a rota basis. In total, the General Maintenance Operative, will be required to work a total of 8 Saturdays per annum.

There will also be occasions when you will be required to work additional overtime, with prior agreement. All overtime must be authorised in advance by the Maintenance Manager.

Sick pay

The postholder will automatically join the contractual sickness scheme after the first six months of employment. In the event of sickness, after the qualifying period you will receive 6 weeks at full pay and 6 weeks at half pay, and thereafter Statutory Sick Pay.

Holiday

Shrewsbury School's annual leave year runs from 1 April to 31 March: a full year's entitlement is 28 days per annum, plus statutory bank holidays. New members of staff will receive a pro-rata entitlement in this leave year if employment commences part way through the year.

Pension

All support employees are eligible to join Shrewsbury School's Pension Scheme (employee 5%, employer 7.5%).

Life Insurance

The post holder will be able to join the death-in-service insurance scheme. In the event of your death whilst in Shrewsbury School's employment your estate will receive two times your basic salary.

Staff Benefits

Training & Development

All Shrewsbury School staff have the opportunity to access generous professional training; we seek to develop individuals in all areas of their school life.

Provision of Meals

When the kitchens are operational, free lunch will be provided at our dining room in Kingsland Hall. Refreshments are provided on site.

Parking

Parking is provided free of charge on and around site in designated areas and with a school permit.

Sports Facilities

Our swimming pool has both staff and staff family swim times. We have tennis courts, padel courts, squash courts and a gymnasium which are available for staff use.

Cycle to Work Scheme

The scheme gives employees access to significant savings on cycles and accessories used for commuting purposes.

Employee Assistance Programme (EAP)

Staff can access free counselling sessions through our EAP service.

Recruitment Guidance Notes:

Shrewsbury School 2026

Terms of Appointment

Under the Department of Education's Keeping Children Safe in Education Regulations we have a legal duty to follow safer recruitment checks. Therefore, any appointment will be subject to the following employment checks:

Probationary Period

All appointments are subject to a twelve-month probationary period.

Application Form

All candidates must complete our application form to be considered for a job. You must list your employment history from the date you left full-time education and give details of any employment gaps. This should be accompanied by a covering letter which details your suitability for the role and what you would bring to the School.

Note: Unfortunately, CVs are not accepted.

Please submit your completed application form and covering letter via the link embedded in the relevant job advert on our website, which can be found via [Job Vacancies | Shrewsbury School](#).

References

In order to assess candidates' suitability, we shall request at least two references. Please note that in accordance with best practice Shrewsbury School will follow up written references with a telephone call to the referee. The School will also follow up recent employment within an educational setting.

Right to work in the UK

If you are invited to attend an interview you will be asked to bring identification with you to confirm your right to work in the UK. We ask that you bring **three** forms of identification with you, to include:

- ✦ Current passport, share code or eligible immigration document
- ✦ Current driving licence
- ✦ Birth or adoption certificate for the UK or Channel Islands - issued within 12 months of birth (*including those issued by UK authorities overseas, e.g. Embassies, High Commission and HM Forces*).

Evidence of qualifications

If you are invited to attend an interview you will be asked to bring original evidence of your qualifications.

Medical Fitness

If successfully appointed, you will be asked to complete a health declaration questionnaire and if necessary, an occupational health referral will be made.

Safer recruitment checks

Please read through the School's Safer Recruitment Policy which will give full details of the safer recruitment checks undertaken as part of the on-boarding procedure. If you have any questions on any of these checks please contact us. In summary, below are details of some of the checks carried out.

DBS Disclosure and other checks

If you have ever been convicted of a criminal offence, bound over or cautioned, you must read carefully the section of the application form headed 'Criminal Convictions'. The appointment is subject to a satisfactory Enhanced Disclosure & Barring Service (DBS) Certificate.

Overseas Police check

If you have spent time abroad for three months or more in the last five years you will be required to obtain an overseas check from that country. The School will support the successful candidate through this process.

Prohibition check

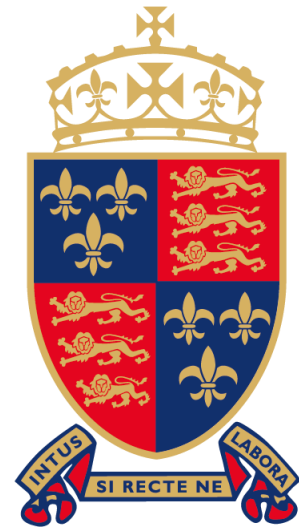
Some pupil facing job roles require the School to carry out a prohibition check. This is carried out online via the Department for Education website.

Social Media check

The School is required under Keeping Children Safe in Education to carry out a social media check on all candidates invited for interview.

Shrewsbury

CO-EDUCATIONAL BOARDING & DAY SCHOOL



The Schools, Shrewsbury. Shropshire SY3 7BA.

Email: recruitment@shrewsbury.org.uk

Telephone: 01743 280500

www.shrewsbury.org.uk

Registered charity number: 528413

