

Shrewsbury

CO-EDUCATIONAL BOARDING & DAY SCHOOL



Information for Candidates

Swimming Instructors

April 2026

Contents

Headmaster's Welcome	3
Welcome to Shrewsbury School	4
Swimming Instructor	5
Job Description	7
Person Specification	9
Our Ethos	11
Academic Life at Shrewsbury	12
Support Staff at Shrewsbury	13
Pastoral Life at Shrewsbury	14
Co-Curricular Life at Shrewsbury	15
International Links	16
The Application Process	17
Benefits and Contractual Terms	19
Recruitment Guidance Notes	20

Headmaster's Welcome

Having moved to Shropshire with my wife and young family in 2018, I can speak with first-hand experience of the warmth of welcome offered by the School community and indeed within the town of Shrewsbury. It really is a friendly, gentle yet invigorating place to live and work.

The School's 110 acres have the feel of a village gathered around a green. Stunning architecture complements the natural beauty of ancient trees and open spaces that are meticulously maintained. We wholeheartedly believe that children and staff alike respond to the inspiration of their surroundings. There can surely be fewer more uplifting places in which to live and learn. Staff morale is high and there is a shared sense of purpose which is energising. The pupils are a diverse crowd who are united by a willingness to participate and enjoy all that the school has to offer. We have an excellent staff development programme ensuring that colleagues are stimulated to keep growing as professionals.

Above all, it is a community where the individual is celebrated and encouraged to become the fullest and best version of her or himself: this goes as much for the staff as it does the children in our care.

Thank you for your interest in Shrewsbury School. I hope that this document will encourage you to go ahead with an application that may lead to your joining this unique and vibrant school community.



Welcome to Shrewsbury School

Shrewsbury School, Independent School of the Year 2020, has a world-class reputation for all-round excellence. Fully co-educational, with a seven-day boarding heartbeat and an integral day community, the school delivers a dynamic education that develops the abilities and enthusiasms of each and every pupil.

Founded by Royal Charter in 1552, Shrewsbury School is one of the 'great' nine schools in England identified by the Clarendon Commission of 1861. The School moved to its current location in 1882. Over the centuries it has grown in size and reputation. The School is now ranked amongst the leading co-educational boarding schools in the world, educating around 840 pupils aged 13-18 years.

Shrewsbury delivers a programme of academic learning that is exciting, challenging, responsive and versatile. On the School's breath-taking 110-acre site on the banks of the River Severn, pupils also have the opportunity to participate in a wide range of sporting, music, drama and co-curricular activities, as well as being encouraged to engage in adventure and charitable endeavour.

Shrewsbury School is committed to a seven-day full boarding model that benefits from a local day element. The School offers only one kind of boarding: full boarding, with nearly 80% of the school roll being full boarders and around 20% holding non-UK passports.

Packwood Haugh Prep School (co-educational, boarding and day school for pupils aged 3-13) became part of the Shrewsbury family of Schools in 2019.

Shrewsbury is a registered charity with a number of wholly owned trading companies, an annual income of over £35m and a staff of 400. It is overseen by a Governing Body which has up to 19 members. The Governing Body and its Committees meet once a term.

Recent years have seen an ambitious programme of new buildings and refurbishment projects. The fully refurbished Barnes Theatre, recently opened by Sir Michael Palin, Old Salopian, with additional new teaching facilities for Drama and Dance. A full refurbishment of Rigg's Hall, one of our boys' Houses, completed in 2022, with refurbishment projects of Churchill's and Ingram's Hall finished in December 2023. The building of a fifth girls' House (Queen Elizabeth Hall) was completed and opened in September 2023, along with two new all-weather sports pitches.

Swimming Instructor

Permanent, part time,

Role 1 : Monday, Wednesday and Friday – 8.5 hours per week

Role 2 : Tuesday and Saturday – 8.5 hours per week

Shrewsbury School Swimming Academy strives to deliver the highest possible standards in the teaching of swimming to children aged 4 upwards, through the Swim England teaching plan.

Following the ever-growing success of the Swimming Academy we are looking to appoint a Swimming Instructor who can deliver high standards of teaching.

We would like to hear from you if you:

- Can deliver high standards of swimming teaching and realise every individual's true swimming potential.
- Hold a current Swim England teaching qualification at level 1 or above.
- Are self-motivated, sympathetic and have an encouraging personality with the ability to make learning fun.
- Work well in a team, as well as on your own initiative.

If you are passionate about swimming and want to come and join our talented and professional team, providing high quality-swimming lessons within the guidelines of the Swim England teaching plan, we would like to hear from you.

Role 1 - Monday and Wednesday 4.00pm to 6.30pm, Friday 4.00pm to 7.30pm

Role 2 - Tuesday 4.00pm to 8.00pm, Saturday 9.00am to 1.30pm

In addition to a competitive salary, we offer generous benefits including enhanced pension contributions, training and development, life insurance, car parking, use of school facilities when not in use by pupils (library, swimming pool, gym, tennis courts, squash courts) and access to a cycle to work scheme.

Our salaries are based on level of qualification and experience and range from £13.95 per hour for a Level 1 qualification to £17.42 per hour for a Level 2 qualification plus experience/continued CPD.

Early applications are encouraged. We reserve the right to close this vacancy early, should a suitable candidate be appointed before the closing date.

A full application pack and job description can be obtained from our website:

**<http://www.shrewsbury.org.uk/page/job-vacancies>
or email recruitment@shrewsbury.org.uk**

Closing Date: 12 noon, Friday 1st May 2026.

Interviews will be held at the school week commencing 4th May

Shrewsbury School is committed to safeguarding and promoting the welfare of children and young people, and applicants must be willing to undergo child protection screening appropriate to the post, including checks with past employers and the Disclosure and Barring Service.

Job Description

MAIN PURPOSE OF ROLE

Shrewsbury School Swimming Academy are looking for passionate, enthusiastic and organised swimming teachers to join our learn to swim programme. Your primary role will be to teach children of all ages and abilities, to develop swimming skills, technique, and confidence in the water.

LEVEL OF POSITION

The Post holder will report directly to the Swimming Co-ordinator who is responsible for day-to-day Line Management including annual reviews, training and development and health and safety.

DUTIES AND RESPONSIBILITIES

The duties and responsibilities below are illustrative. The position holder will be expected to become involved in a range of work on occasions that may not be shown below:

Main Responsibilities

- To teach swimmers of all abilities and help them achieve the aims required by the Swim England standards, ensuring this is done in a safe and encouraging manner.
- To plan and deliver lessons ensuring adherence to the scheme of work and lesson plans appropriate to the level of swimmer.
- To be a positive role model, creating a fun environment in which to motivate and encourage children to participate in swimming.
- Identify participants' abilities and encourage them to reach their full potential.
- Regularly assess each participant's ability and progress using our online home portal.
- Correct faults in swimming techniques and identify ways to improve performance.

- Provide explanations and demonstrate swimming technique.
- To set-up and put away any equipment.
- Identify individual swimmer needs and liaise with the Swimming co-ordinator as necessary.
- To attend termly Swimming Academy meetings.
- To undertake any additional duties as may be required by the Sports Facilities Manager.

Specialist Responsibilities

- To teach to Swim England standards; maintain current knowledge of governing body programs, policies and practices.

Suitability To Work With Children

- Shrewsbury School is committed to safeguarding and promoting the welfare of children and young people and expects all staff and volunteers to share this commitment.
- The postholder must comply with the School's Safeguarding & Child Protection policy at all times.
- The postholder must undergo Safeguarding & Child Protection training as directed by their Line Manager.
- Full safer recruitment checks will be completed on successful candidates which will include an Enhanced Disclosure & Barring (DBS) check.

Contact

- In all contacts the successful applicant will be required to be a good ambassador for Shrewsbury School as well as maintain constructive relationships.

Person Specification

It is anticipated that the successful candidate will demonstrate the following:

Essential Desirable

Qualifications:

Swimming Teacher level 1 (equivalent STA qualification considered)	✓	
Swimming Teacher level 2		✓
Swimming CPD's, Coach Level 1 and 2		✓
NPLQ		✓
Defibrillator Certificate		✓

Work Experience:

Previous work experience in a similar role would be an advantage		✓
To have a knowledge of the Swim England learn to swim program.		✓
Experience of teaching pupils in groups of mixed ability and age		✓
To have a good knowledge of swimming techniques		✓
Good interpersonal and pro-active skills		✓
Excellent communication skills to liaise with a wide range of people		✓
Experience of working independently and as part of a team		✓
To ensure standards for quality, customer service and health and safety are met		✓

Essential Desirable

Specialist knowledge

Awareness of Health & Safety at Work Regulations in a Swimming Centre environment ✓

Personal attributes:

Ability to establish and maintain positive relationships and empathise with Swimmers of all abilities ✓

Well organised, task orientated and able to co-ordinate a range of activities ✓

Self-motivation and personal drive ✓

The ability to deal with pupils and parents and their queries and concerns with tact and sensitivity ✓

Must be reliable and committed ✓

Ability to work within a small team, working and supporting colleagues ✓

Other/Special Working conditions:

Willing to undertake training and development when required. Must attend all statutory training programmes ✓

Ability to work shifts which may include evenings and Saturday mornings ✓

Our Ethos

Shrewsbury School has a strong vision, derived from our position as a major co-educational boarding and day school of international reputation.

A Shrewsbury education will educate and empower each individual pupil to flourish in life and contribute positively to the world around them.

Shrewsbury offers a unique whole person education – Floreat – that fosters learning and personal development in four vital and mutually reinforcing fields: the intellectual; the active; the expressive and the reflective. Through this distinctive model of education Shrewsbury promotes the Six Salopian Virtues: wisdom; kindness; courage; integrity; self-mastery and spirit.

As a learning community, the school pursues academic knowledge, wisdom and truth with the aim of developing the ‘cultural capital’ of each child and instilling character strengths, aptitudes and vital life skills, such as resilience and resourcefulness. The individual is able to flourish whilst also pursuing communal values, social responsibility and a willingness to contribute positively to the wider world.

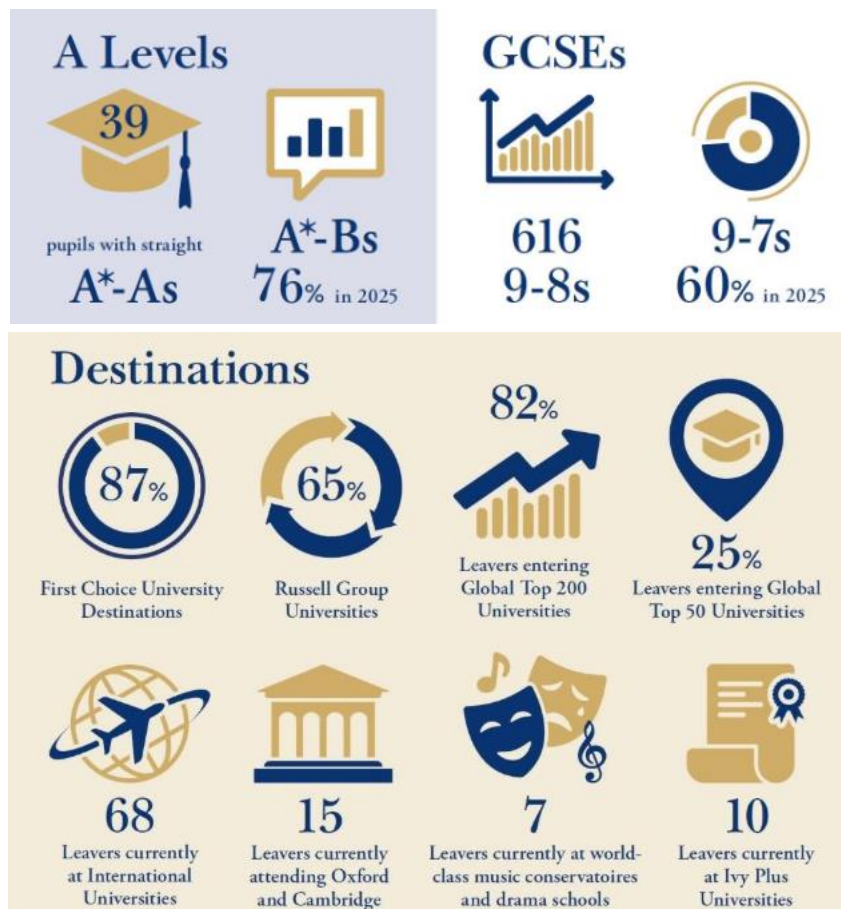
More information about Shrewsbury’s Ethos and Educational Philosophy can be found [here](#).



Academic Life at Shrewsbury

Academic life focuses on developing intellectually curious young adults who are able to think critically and creatively, have the confidence to question and to challenge and are equipped with the skills that they will need to thrive at all stages of life.

In recent years, around 5% of our leavers have gone on to Oxford and Cambridge and virtually all have won places at the university of their first choice. We expect about 80% of A Levels each year to be passed at A*, A or B grade. But there is as much joy for pupils who surpass their own expectations as there is for the pupil whose progress to top grades always seemed more certain. Our Summer 2025 results and destinations are summarised below:



Support Staff at Shrewsbury

Support staff provide management and operational support, in various careers, which enables teachers to focus on the teaching and learning of our pupils. We believe that having motivated and enthusiastic staff who want to support teaching and learning is critical to our academic provision.

We will always strive to achieve the highest possible standards in the breadth and quality of our curriculum, the provision of our facilities and resources and achievements, whether academic, sporting, musical, theatrical or artistic, of our pupils and our staff.

Shrewsbury delights in the uniqueness of its education; a blend of values, traditions, and inspiring people. Our staff are our greatest asset with both teaching and support staff inspiring our pupils through their dedicated professional support.



Swimming Pool

Pastoral Life at Shrewsbury

The unique, friendly yet respectful atmosphere between staff and students plays a crucial part in establishing the character of Salopians and the School. Together we are a highly supportive community. The House system (7 boys' Houses and 5 girls' Houses) is at the heart of Shrewsbury School.

The House is a Salopian's centre of gravity, a real home from home, somewhere to relax and make friends, as well as work. In addition to their Housemaster or Housemistress, each pupil has a personal tutor who also has strong links to a house and will be involved in a duty evening plus helping out with house events and trips.



Co-Curricular Life at Shrewsbury

We want all our pupils, whatever their ability, to enjoy their life beyond the classroom, and Shrewsbury has a well-earned reputation for artistic, musical and sporting excellence.

We compete internationally in cricket and rowing, and we are one of the strongest schools in the country for football, cross-country running and fives. Facilities and coaching for these - and a host of other sports including badminton, basketball, tennis, fencing, lacrosse, hockey, netball, and rugby - are excellent.

Our school plays and musicals have drawn praise at the Edinburgh Fringe Festival and in London. As one would expect from one of the strongest music departments in the country, the breadth and quality of music making is remarkable, and a number of pupils win places at some of the top music colleges each year.

We also offer our pupils an extraordinary array of clubs, societies and other co-curricular activities, many of which take place on a dedicated weekly activity afternoon. The majority are led by members of school staff.

Shrewsbury is surrounded by glorious unspoiled countryside and the School makes the most of its easy access to the Shropshire Hills, the Welsh Marches and Snowdonia, as well as easy access to Birmingham and Manchester.



International Links

Shrewsbury School delight's in playing its part in developing outstanding schools around the world. Our first international school opened in Bangkok in 2003 and has become the benchmark for quality education in the city and the wider region.

We opened a second campus in Bangkok in 2018 to keep up with demand, while at the same time opening a new school in Hong Kong. In 2021, Shrewsbury signed an agreement for a new international school to be launched in Phnom Penh, Cambodia. Plans are afoot to open further international schools in the coming years, including Shrewsbury School India in 2025.

The Shrewsbury family of schools share commitment to encouraging intellectual curiosity and respecting diversity and have formed a close and effective partnership over the years. We exchange best practice and perspectives from our own operating contexts via regular staff visits and via Governors who sit on the Boards of the schools. Over the years Shrewsbury UK alumni have visited Bangkok to enjoy gap year opportunities there.



The Application Process

Please complete the Shrewsbury School application form together with a covering letter.

Please submit your completed application form and covering letter via the link embedded in the relevant job advert on our website, which can be found via [Job Vacancies | Shrewsbury School](#).

Alternatively, you may prefer to send a printed copy, addressed to: The Human Resources Department, The Bursary, Kingsland House, Shrewsbury, Shropshire, SY3 7BB.

Closing Date: 12 noon, Friday 1st May 2026.

Interviews will be held at the school week commencing 4th May

Early applications are encouraged. We reserve the right to close this vacancy early, should a suitable candidate be appointed before the closing date.

Short-listed candidates will be contacted by telephone.

Offers will be given verbally and in writing as soon as possible following the interview.

Queries regarding applications should be addressed to:
recruitment@shrewsbury.org.uk or telephone 01743 250834.

Please also see the Recruitment Guidance Notes on page 20.



Contractual Terms

Contractual staff benefits

Salary

The salary is based on level of qualification and experience, and ranges from £13.95 per hour for a Level 1 qualification to £17.42 per hour for a Level 2 qualification plus experience/continued CPD.

Hours

Role 1 - Monday and Wednesday 4.00pm to 6.30pm, Friday 4.00pm to 7.30pm
Role 2 - Tuesday 4.00pm to 8.00pm, Saturday 9.00am to 1.30pm

Sick pay

The postholder will automatically join the contractual sickness scheme after the first six months of employment. In the event of sickness, you will receive 6 weeks at full pay and 6 weeks at half pay and thereafter Statutory Sick Pay.

Holiday

Apart from the contractual weeks requiring the postholder to work during some school holidays, as detailed above, you will not be required to work during the remaining school holiday dates. The successful candidate will be entitled to paid holidays, which is based on the statutory minimum entitlement under the Working Time Regulations 1998, which is paid as part of the overall annualised salary.

Pension

All support employees are eligible to join Shrewsbury School's Pension Scheme (employee 5%, employer 7.5%).

Life Insurance:

The post holder will be able to join the death-in-service insurance scheme. In the event of your death whilst in Shrewsbury School's employment your estate will receive two times your basic salary.

Staff Benefits

Training & Development

All Shrewsbury School staff have the opportunity to access generous professional training; we seek to develop individuals in all areas of their school life.

Provision of Meals

While the kitchens are operational, lunch is provided in our dining room, Kingsland Hall.

Parking

Parking is provided free of charge on and around site in designated areas and with a school permit.

Sports Facilities

Our swimming pool has both staff and staff family swim times. We have tennis courts, squash courts and a gymnasium which are available for staff use.

Discount Gym membership

There is a discounted gym membership that staff can access at a local club.

Cycle to Work Scheme

The scheme gives employees access to significant savings on cycles and accessories used for commuting purposes.

Counselling

Staff can access free counselling sessions through our assigned local counselling service.

Recruitment Guidance Notes:

Terms of Appointment

Under the Department of Education's Keeping Children Safe in Education Regulations we have a legal duty to follow safer recruitment checks. Therefore, any appointment will be subject to the following employment checks:

Probationary Period

All appointments are subject to a twelve months' probationary period.

Application Form

All candidates must complete our application form to be considered for a job. You must list your employment history from the date you left full-time education and give details of any employment gaps. This should be accompanied by a covering letter.

Note: CVs are not accepted.

Please submit your completed application form and covering letter via the link embedded in the relevant job advert on our website, which can be found via [Job Vacancies | Shrewsbury School](#).

References

In order to assess candidates' suitability, we shall request at least three references. Please note that in accordance with safer recruitment regulations, Shrewsbury School will follow up written references with a telephone call to the referee. The School will also follow up recent employment within an educational setting.

Right to work in the UK

If you are invited to attend an interview you will be asked to bring identification with you to confirm your right to work in the UK. We ask that you bring **three** forms of identification with you, to include:

- ✿ Current passport, share code or eligible immigration document
- ✿ Current driving licence

- ✦ Birth or adoption certificate for the UK or Channel Islands - issued within 12 months of birth (*including those issued by UK authorities overseas, e.g. Embassies, High Commission and HM Forces*)

Evidence of qualifications

If you are invited to attend an interview you will be asked to bring original evidence of your qualifications.

Medical Fitness

If successfully appointed, you will be asked to complete an occupational health statement and if necessary, complete a pre-employment health screening.

Safer recruitment checks

Please read through the school's Safer Recruitment Policy which will give full details of the safer recruitment checks undertaken as part of the on-boarding procedure. If you have any questions on any of these checks please contact us. In summary, below are details of some of the checks carried out.

Disclosure & Barring Service (DBS) Disclosure:

If you have ever been convicted of a criminal offence, bound over or cautioned, you must read carefully the section of the application form headed 'Criminal Convictions'. The appointment is subject to a satisfactory Enhanced Disclosure & Barring Service (DBS) Certificate.

Overseas Police check

If you have spent time abroad for three months or more in the last five years you will be required to obtain an overseas check from that country. The school will support the successful candidate through this process.

Prohibition check

Some pupil facing job roles require the School to carry out a prohibition check. This is carried out online via the Department for Education website.

Online check

Under the Keeping Children Safe in Education guidance, the school is required to carry out online searches of publicly available information for shortlisted candidates.



Shrewsbury

CO-EDUCATIONAL BOARDING & DAY SCHOOL

The Schools, Shrewsbury. Shropshire SY3 7BA.
Email: recruitment@shrewsbury.org.uk
Telephone: 01743 280500

www.shrewsbury.org.uk

Registered charity number: 528413

