

Shrewsbury

CO-EDUCATIONAL BOARDING & DAY SCHOOL



Information for Candidates

Graduate Sports Coach

Contents

Headmaster's Welcome	3
Welcome to Shrewsbury School	4
Graduate Sports Coach	5
Job Description	6
Person Specification	9
Our Ethos	11
Academic Life at Shrewsbury	12
Support Staff at Shrewsbury	13
Pastoral Life at Shrewsbury	14
International Links	15
The Application Process	16
Benefits and Contractual Terms	17
Recruitment Guidance Notes	19

Headmaster's Welcome

Having moved to Shropshire with my wife and young family in 2018, I can speak with first-hand experience of the warmth of welcome offered by the School community and indeed within the town of Shrewsbury. It really is a friendly, gentle yet invigorating place to live and work.

The School's 110 acres have the feel of a village gathered around a green. Stunning architecture complements the natural beauty of ancient trees and open spaces that are meticulously maintained. We wholeheartedly believe that children and staff alike respond to the inspiration of their surroundings. There can surely be fewer more uplifting places in which to live and learn. Staff morale is high and there is a shared sense of purpose which is energising. The pupils are a diverse crowd who are united by a willingness to participate and enjoy all that the school has to offer. We have an excellent staff development programme ensuring that colleagues are stimulated to keep growing as professionals.

Above all, it is a community where the individual is celebrated and encouraged to become the fullest and best version of her or himself: this goes as much for the staff as it does the children in our care.

Thank you for your interest in Shrewsbury School. I hope that this document will encourage you to go ahead with an application that may lead to your joining this unique and vibrant school community.



Welcome to Shrewsbury School

Shrewsbury School, Independent School of the Year 2020, has a world-class reputation for all-round excellence. Fully co-educational, with a seven-day boarding heartbeat and an integral day community, the school delivers a dynamic education that develops the abilities and enthusiasms of each and every pupil.

Founded by Royal Charter in 1552, Shrewsbury School is one of the 'great' nine schools in England identified by the Clarendon Commission of 1861. The School moved to its current location in 1882. Over the centuries it has grown in size and reputation. Girls first joined the Sixth Form in 2008 and it is now ranked amongst the leading co-educational boarding schools in the world, educating around 830 pupils aged 13-18 years.

Shrewsbury delivers a programme of academic learning that is exciting, challenging, responsive and versatile. On the School's breath-taking 110-acre site on the banks of the River Severn, pupils also have the opportunity to participate in a wide range of sporting, music, drama and co-curricular activities, as well as being encouraged to engage in adventure and charitable endeavour.

Shrewsbury School is committed to a seven-day full boarding model that benefits from a local day element. The current school roll in September is around 840 pupils of whom more than three-quarters are full boarders and around 20% are non-UK passport holders.

Packwood Haugh Prep School (co-educational, boarding and day school for pupils aged 3-13) became part of the Shrewsbury family of Schools in 2019.

Shrewsbury is a registered charity with a number of wholly owned trading companies, an annual income of over £25m and a staff of 400. It is overseen by a Governing Body which has up to 19 members. The Governing Body and its Committees meet once a term.

Recent years have seen an ambitious programme of new buildings and refurbishment projects now ongoing. The fully refurbished Barnes Theatre, recently opened by Sir Michael Palin, Old Salopian, with additional new teaching facilities for Drama and Dance. A full refurbishment of Rigg's Hall, one of our boys' Houses, has just been completed and the school has completed the building of a fifth girls' House (Queen Elizabeth Hall) which opened September 2023, along with two new all-weather sports pitches.

GRADUATE SPORTS COACH

**Fixed term for one academic year – September 2024 start
Accommodation may be available**

Shrewsbury School seeks to appoint a recent graduate to coach sport with effect from September 2024. We are looking for applicants with one or more of the following specialisms:

Hockey, Netball and Football

Our pupils are talented, so applications from candidates with a high level of playing or coaching experience will be welcomed.

The successful candidate may be interested in PE teaching and/or Sport Science support and candidates offering video/performance analysis or strength & conditioning (S&C) expertise would be welcomed (but not essential).

The successful candidates will be expected to contribute fully to boarding school life.

A full application pack and job description can be obtained from the school website <https://www.shrewsbury.org.uk/page/job-vacancies>,

alternatively please email humanresources@shrewsbury.org.uk or telephone 01743 280834.

Closing date for applications is 12pm, Tuesday 19 March 2024

Interviews will be held on Friday 22 March 2024

The School reserves the right to appoint at any stage of the recruitment process.

Shrewsbury School is committed to safeguarding and promoting the welfare of children and young people, and applicants must be willing to undergo child protection screening appropriate to the post, including checks with past employers and the Disclosure and Barring Service.

Job Description

MAIN PURPOSE OF ROLE

The Graduate Sports Coach will play a significant role in the coaching of sport (School & House programme) and

assist the PE Faculty in a teaching or sports science support capacity or, indeed, another academic discipline.

LEVEL OF POSITION

The Post holder will report directly to the Director of Sport who is responsible for day-to-day Line Management including annual reviews, training and development and health and safety.

DUTIES AND RESPONSIBILITIES

The duties and responsibilities below are illustrative. The position holder will be expected to become involved in a range of work on occasions that may not be shown below:

Main Responsibilities:

Within the PE Department

- To take responsibility for the coaching of a boys or girls squad in each term.
- To assist, where required, with other school squads, including the 1st team in their major sport(s).
- To assist with the delivery of an enhanced Sports Science framework (video analysis, strength & conditioning and fitness testing).
- To assist with the teaching of core Physical Education to 3rd Form pupils and Curriculum Games.
- To assist with the teaching of academic Physical Education, and in particular with the delivery of the practical elements of both GCSE and A-Level PE. If appropriate, they may be given responsibility for the teaching of a block of lessons in a specialist area.

- To become a mentor to a small group of gifted and talented pupils who may or may not be Sports Scholars, involving regular tutorials.
- To assist with the organisation and implementation of the annual Sports Scholarship assessments including fitness testing.
- To attend the weekly PE Faculty meetings.
- To visit local Prep Schools, as directed by the Director of Sport, to referee, umpire, coach and assist with liaison.
- To assist with Prep School Taster Days and our Annual Prep School Tournaments (inc. some Sundays).
- To assist with the organisation of sports lectures.
- To assist the Sports Administrator (Director of Sport's secretary) with admin tasks such as collating data or updating the School Sport website.

Whole School

- To become a tutor in a boarding house. This will include undertaking one evening duty per week and being on hand to help in the house at other times within reason.
- To tutor a small group of pupils from his / her allocated boarding house.
- To write tutor reports as and when required.
- To carry out any further duties such as occasional supervision in the dining hall and at break time.

Suitability to work with children:

- Shrewsbury School is committed to safeguarding and promoting the welfare of children and young people and expects all staff and volunteers to share this commitment.
- The postholder must comply with the School's Safeguarding & Child Protection policy at all times.
- The postholder must undergo Safeguarding & Child Protection training as directed by their Line Manager.
- Full safer recruitment checks will be completed on successful candidates which will include an Enhanced Disclosure & Barring (DBS) check.

Contacts:

- In all contacts the successful applicant will be required to be a good ambassador for Shrewsbury School as well as maintain constructive relationships.

Person Specification

It is anticipated that the successful candidate will demonstrate the following:

Essential Desirable

Qualifications:

- | | | |
|---|---|---|
| • A Good standard of education. | ✓ | |
| • Minimum level 1 Coaching Award and/or high level performance history. | ✓ | |
| • A certificate in First Aid Training (training can be given) | | ✓ |

Work Experience:

- | | | |
|---|---|---|
| • Good all round knowledge of long-term development practices for young sports men/women. | ✓ | |
| • Experience of working with young people | ✓ | |
| • Excellent proven written and oral communication. | | ✓ |

Personal attributes:

- | | |
|--|---|
| • Have an excellent rapport with children, with the ability to deliver enthusiastic and focused coaching sessions. | ✓ |
| • Self-motivated and pro-active approach. | ✓ |
| • Ability to self-motivate, confident and assertive | ✓ |
| • Ability to relate to, and supervise, pupils. | ✓ |

- Must be able to project manage and problem solve ✓
- Excellent interpersonal, communication and organisational skills ✓
- A good team player who can also work on own initiative. ✓
- Must have a confident disposition. ✓

Other/Special Working conditions:

- Valid driving licence, with D1 would be an advantage ✓
- Able to be flexible to working hours ✓
- Possess cultural awareness and sensitivity in working towards the aims of Shrewsbury School ✓

Our Ethos

Shrewsbury School has a strong vision, derived from our position as a major co-educational boarding and day school of international reputation.

A Shrewsbury education will educate and empower each individual pupil to flourish in life and contribute positively to the world around them.

Shrewsbury offers a unique whole person education – Floreat – that fosters learning and personal development in four vital and mutually reinforcing fields: the intellectual; the active; the expressive and the reflective. Through this distinctive model of education Shrewsbury promotes the Six Salopian Virtues: wisdom; kindness; courage; integrity; self-mastery and spirit.

As a learning community, the school pursues academic knowledge, wisdom and truth with the aim of developing the 'cultural capital' of each child and instilling character strengths, aptitudes and vital life skills, such as resilience and resourcefulness. The individual is able to flourish whilst also pursuing communal values, social responsibility and a willingness to contribute positively to the wider world.

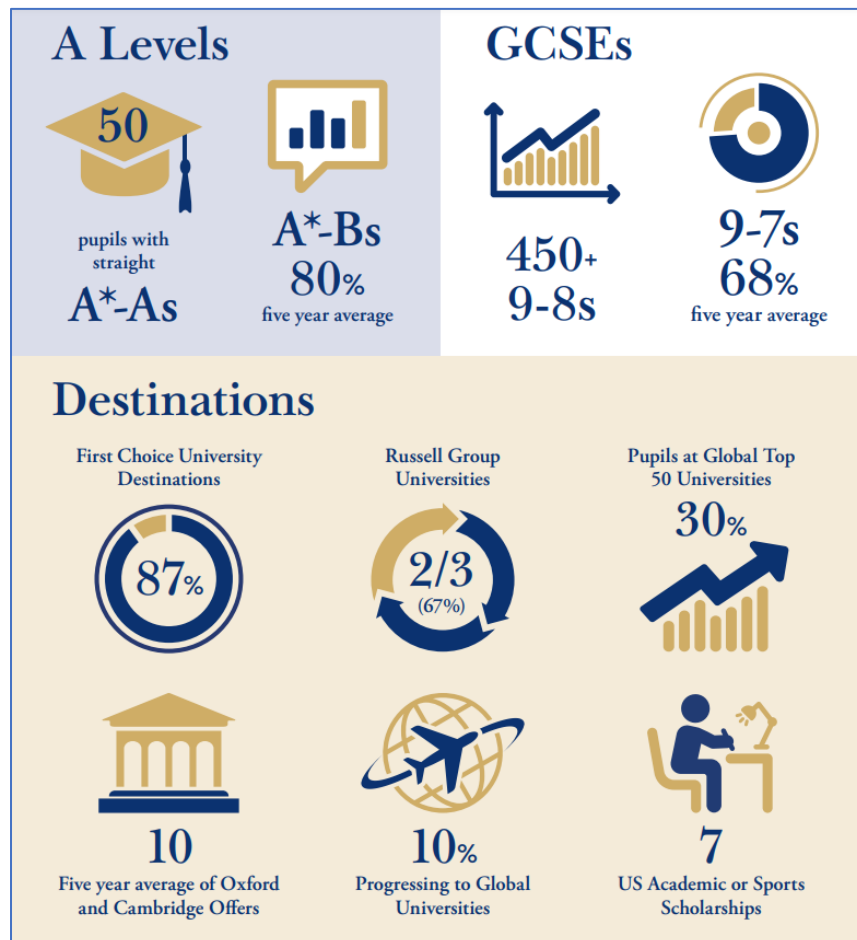
More information about Shrewsbury's Ethos and Educational Philosophy can be found [here](#).



Academic Life at Shrewsbury

Academic life focuses on developing intellectually curious young adults who are able to think critically and creatively, have the confidence to question and to challenge and are equipped with the skills that they will need to thrive at all stages of life.

In recent years, around 10% of our leavers have gone on to Oxford and Cambridge and virtually all have won places at the university of their first choice. We expect about 80% of A Levels each year to be passed at A*, A or B grade. But there is as much joy for pupils who surpass his or her expectations as there is for the pupil whose progress to top grades always seemed more certain.



2023 Public Examination Results at Shrewsbury

Support Staff at Shrewsbury

Support staff provide management and operational support, in various careers, which enables teachers to focus on the teaching and learning of our pupils. We believe that having motivated and enthusiastic staff who want to support teaching and learning is critical to our academic provision.

We will always strive to achieve the highest possible standards in the breadth and quality of our curriculum, the provision of our facilities and resources and achievements, whether academic, sporting, musical, theatrical or artistic, of our pupils and our staff.

Shrewsbury delights in the uniqueness of its education; a blend of values, traditions, and inspiring people. Our staff are our greatest asset with both teaching and support staff inspiring our pupils through their dedicated professional support.



Pastoral Life at Shrewsbury

The unique, friendly yet respectful atmosphere between staff and students plays a crucial part in establishing the character of Salopians and the School. Together we are a highly supportive community. The House system (7 boys' Houses and 5 girls' Houses) is at the heart of Shrewsbury School.

The House is a Salopian's centre of gravity, a real home from home, somewhere to relax and make friends, as well as work. In addition to their Housemaster or Housemistress, each pupil has a personal tutor who also has strong links to a house and will be involved in a duty evening plus helping out with house events and trips.



International Links

At Shrewsbury School we delight in playing our part in developing outstanding schools around the world. Our first international school opened in Bangkok back in 2003 and has become the benchmark for quality education in the city and the wider region.

So successful has the venture been that we opened a second campus in Bangkok in 2018 to keep up with demand, while at the same time opening a new school in Hong Kong. In 2021, Shrewsbury signed an agreement for a new premium international school to be launched in Phnom Penh, Cambodia. Plans are afoot to open further international schools in the coming years.

The Shrewsbury family of schools share commitment to encouraging intellectual curiosity and respecting diversity and have formed a close and effective partnership over the years. We exchange best practice and perspectives from our own operating contexts via regular staff visits and via Governors who sit on the Boards of both schools. Over the years Shrewsbury UK graduates have visited Bangkok to enjoy gap year opportunities there.



The Application Process

Please complete the Shrewsbury School application form together with a covering letter.

Please email your documents, ideally as 'pdfs' to: [**recruitment@shrewsbury.org.uk**](mailto:recruitment@shrewsbury.org.uk) by the closing date and time.

Alternatively, you may prefer to send a printed copy, addressed to: The Human Resources Department, The Bursary, Kingsland House, Shrewsbury, Shropshire, SY4 7BA.

- **Closing date for applications is 12pm, Tuesday 19 March 2024**
- **Interviews will be held on Friday 22 March 2024**

- **Start date: September 2024.**

Offers will be given verbally and in writing as soon as possible following the interview.

The School reserves the right to appoint at any stage of the recruitment process.

Queries regarding applications should be addressed to:
recruitment@shrewsbury.org.uk or telephone 01743 250834.

Please also see the Recruitment Guidance Notes on page 19.



Benefits and Contractual Terms

Contractual staff benefits:

Contract

The appointment will be for a fixed term of one year (i.e. until the end of the summer term 2025), with the option of a second year at the School's discretion.

Salary

The salary will be in the region of £16,500 per annum dependent on experience and qualifications.

Hours

You will need to be available for duties during the normal school day. Shrewsbury School is a boarding school and therefore operates 24 hours a day, 7 days a week during term time. It is expected that you will work such reasonable additional or varied hours to suit the needs of the school.

Accommodation

Shared accommodation may be available.

Training & Development

The successful candidates are required to completed in-house statutory training which will be Safeguarding & Child Protection, Manual Handling and First Aid as part of their induction into the School.

Non-contractual Staff Benefits:

Training & Development

All Shrewsbury School staff have the opportunity to access generous professional training; we seek to develop individuals in all areas of their school life.

Provision of Meals

While the kitchens are operational and if on duty, lunch is provided in our dining room, Kingsland Hall.

Parking

Parking is provided free of charge on and around site in designated areas and with a school permit.

Sports Facilities

Our swimming pool has both staff and staff family swim times. We have tennis courts, squash courts and a gymnasium which are available for staff use.

Discount Gym membership

There is a discounted gym membership that staff can access at a local club.

Cycle to Work Scheme

The scheme gives employees access to significant savings on cycles and accessories used for commuting purposes.

Counselling

Staff can access free counselling sessions through the School Counsellors.

Recruitment Guidance Notes:

Terms of Appointment

Under the Department of Education's Keeping Children Safe in Education Regulations we have a legal duty to follow safer recruitment checks. Therefore, any appointment will be subject to the following employment checks:

Probationary Period

All appointments are subject to a twelve months' probationary period.

Application Form

All candidates must complete our application form to be considered for a job. You must list your employment history from the date you left full-time education and give details of any employment gaps. This should be accompanied by a covering letter.

Note: CVs are not accepted.

Your letter and form should be sent as a pdf to: recruitment@shrewsbury.org.uk

References

In order to assess candidates' suitability, we shall request at least three references. Please note that in accordance with best practice Shrewsbury School will follow up written references with a telephone call to the referee. The School will also follow up recent employment within an educational setting.

Right to work in the UK

If you are invited to attend an interview you will be asked to bring identification with you to confirm your right to work in the UK. We ask that you bring **three** forms of identification with you, to include:

✿ Current passport or biometric residence permit

✿ Current driving licence

✿ Birth or adoption certificate for the UK or Channel Islands - issued within 12 months of birth (*including those issued by UK authorities overseas, e.g. Embassies, High Commission and HM Forces*)

✿

Evidence of qualifications

If you are invited to attend an interview you will be asked to bring original evidence of your qualifications.

Medical Fitness

If successfully appointed, you will be asked to complete a medical questionnaire and if necessary, provide a satisfactory report from your GP.

Safer recruitment checks

Please read through the school's Safer Recruitment Policy which will give full details of the safer recruitment checks undertaken as part of the on-boarding procedure. If you have any questions on any of these checks please contact us. In summary, below are details of some of the checks carried out.

Disclosure & Barring Service (DBS) Disclosure:

If you have ever been convicted of a criminal offence, bound over or cautioned, you must read carefully the section of the application form headed 'Criminal Convictions'. The appointment is subject to a satisfactory Enhanced Disclosure & Barring Service (DBS) Certificate.

Overseas Police check

If you have spent time abroad for three months or more in the last five years you will be required to obtain an overseas check from that country. The school will support the successful candidate through this process.

Prohibition check

Some pupil facing job roles require the School to carry out a prohibition check. This is carried out online via the Department for Education website.

Social Media check

The School is required under the Keeping Children Safe in Education to carry out a social media check on all candidates invited for interview.



Shrewsbury

CO-EDUCATIONAL BOARDING & DAY SCHOOL



The Schools, Shrewsbury. Shropshire SY3 7BA.
Email: recruitment@shrewsbury.org.uk
Telephone: 01743 280500

www.shrewsbury.org.uk

Registered charity number: 528413