

**Surname:**

**First Name:**

**Current School:**



# **SHREWSBURY SCHOOL**

## **SIXTH FORM ENTRANCE EXAMINATION 2021**

### **MUSIC**

**(Time: 1 Hour)**

#### **Instructions to candidates:**

Answer all questions, writing your answers in the spaces provided.

The number of marks for each question is shown in brackets ( ).

---

## Section 1 (10 marks)

---

Put a tick (✓) in the box next to the correct answer.

### Example

Name this note:



A ☐    D ☐    C ☒

This shows that you think C is the correct answer.

---

1.1 Name the circled note:



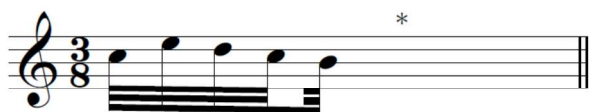
Ab ☐    Eb ☐    G ☐

1.2 Which is the correct time signature?



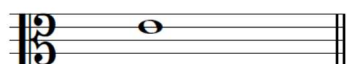
$\frac{3}{2}$  ☐     $\frac{4}{2}$  ☐     $\frac{6}{4}$  ☐

1.3 Which rest(s) should be put below the asterisk (\*) to complete the bar?



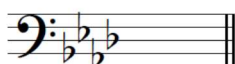
$\frac{3}{8}$  ☐     $\frac{4}{8}$  ☐     $\frac{6}{8}$  ☐

1.4 Which note is the enharmonic equivalent of this note?



Fbb ☐    D $\times$  ☐    D# ☐

1.5 Which note is the supertonic of the minor key shown by this key signature?



Bb ☐    Gb ☐    G ☐

Put a tick (✓) in the box next to the correct answer.

1.6 Which note is the dominant of the major key shown by this key signature?



A ☐ E ☐ D ☐

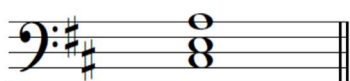
1.7 *morendo* means:

hushed ☐ softly ☐ dying away ☐

1.8 Which of these ornaments should be played as follows?



1.9 Which Roman numeral fits below this dominant chord?



V ☐ vb ☐ Vb ☐

1.10 Name this chord progression in E minor.

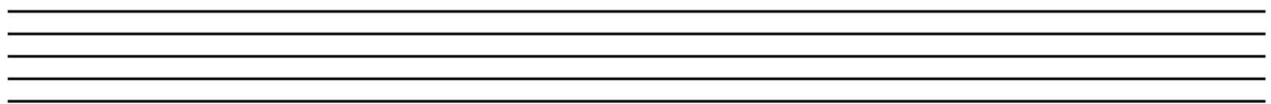


I-V ☐  
ii°b-V ☐  
ii-v ☐

## Section 2 (15 marks)

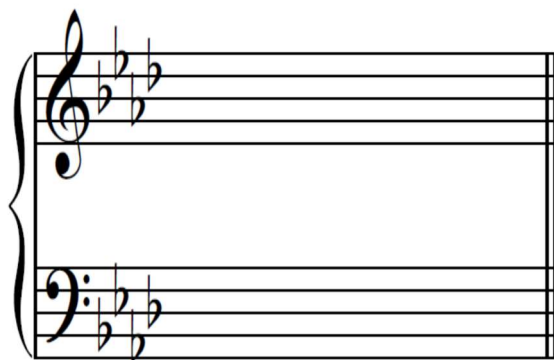
2.1 Transpose this melody up a perfect 4th. Use a key signature.

Chabrier



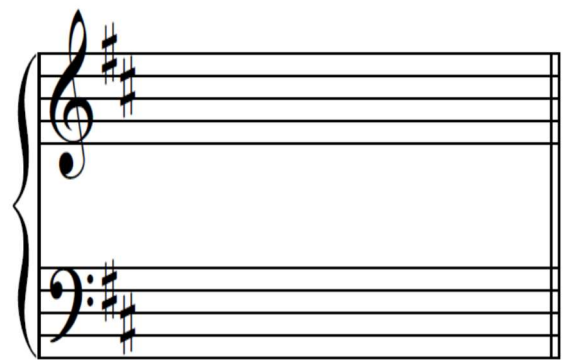
## Section 3 (15 marks)

3.1 Using minims, write out 4-part chords for SATB using the chords shown by the Roman numerals below.



(F minor)

Vc



(D major)

IVb

## Section 4 (20 marks)

Look at the following piece and answer the questions opposite.

Mozart

Larghetto

Measures 1-4 of the musical score. The piece is in 4/4 time, key of B-flat major (three flats). The tempo is marked 'Larghetto'. The first staff (treble clef) contains the melody, and the second staff (bass clef) contains the accompaniment. Measure 1: Treble has a half note G4, quarter note A4, quarter note Bb4, and quarter rest. Bass has a half note G2, quarter note A2, quarter note Bb2, and quarter rest. Measure 2: Treble has a half note G4, quarter note A4, quarter note Bb4, and quarter rest. Bass has a half note G2, quarter note A2, quarter note Bb2, and quarter rest. Measure 3: Treble has a half note G4, quarter note A4, quarter note Bb4, and quarter rest. Bass has a half note G2, quarter note A2, quarter note Bb2, and quarter rest. Measure 4: Treble has a half note G4, quarter note A4, quarter note Bb4, and quarter rest. Bass has a half note G2, quarter note A2, quarter note Bb2, and quarter rest. Dynamics: *p* in measure 1, *fp fp* in measure 4. A trill (*tr*) is marked above the final note of the melody in measure 4.

Measures 5-8 of the musical score. Measure 5: Treble has a half note G4, quarter note A4, quarter note Bb4, and quarter rest. Bass has a half note G2, quarter note A2, quarter note Bb2, and quarter rest. Measure 6: Treble has a half note G4, quarter note A4, quarter note Bb4, and quarter rest. Bass has a half note G2, quarter note A2, quarter note Bb2, and quarter rest. Measure 7: Treble has a half note G4, quarter note A4, quarter note Bb4, and quarter rest. Bass has a half note G2, quarter note A2, quarter note Bb2, and quarter rest. Measure 8: Treble has a half note G4, quarter note A4, quarter note Bb4, and quarter rest. Bass has a half note G2, quarter note A2, quarter note Bb2, and quarter rest. Dynamics: *cresc.* in measure 6, *p* in measure 7. A double bar line with repeat dots is at the end of measure 8.

Measures 9-12 of the musical score. Measure 9: Treble has a half note G4, quarter note A4, quarter note Bb4, and quarter rest. Bass has a half note G2, quarter note A2, quarter note Bb2, and quarter rest. Measure 10: Treble has a half note G4, quarter note A4, quarter note Bb4, and quarter rest. Bass has a half note G2, quarter note A2, quarter note Bb2, and quarter rest. Measure 11: Treble has a half note G4, quarter note A4, quarter note Bb4, and quarter rest. Bass has a half note G2, quarter note A2, quarter note Bb2, and quarter rest. Measure 12: Treble has a half note G4, quarter note A4, quarter note Bb4, and quarter rest. Bass has a half note G2, quarter note A2, quarter note Bb2, and quarter rest. Dynamics: *f* in measure 9, *p* in measure 12. A double bar line with repeat dots is at the end of measure 12.

Measures 13-16 of the musical score. Measure 13: Treble has a half note G4, quarter note A4, quarter note Bb4, and quarter rest. Bass has a half note G2, quarter note A2, quarter note Bb2, and quarter rest. Measure 14: Treble has a half note G4, quarter note A4, quarter note Bb4, and quarter rest. Bass has a half note G2, quarter note A2, quarter note Bb2, and quarter rest. Measure 15: Treble has a half note G4, quarter note A4, quarter note Bb4, and quarter rest. Bass has a half note G2, quarter note A2, quarter note Bb2, and quarter rest. Measure 16: Treble has a half note G4, quarter note A4, quarter note Bb4, and quarter rest. Bass has a half note G2, quarter note A2, quarter note Bb2, and quarter rest. Dynamics: *f* in measure 13, *p* in measure 14. A double bar line with repeat dots is at the end of measure 16.

- 41 In which key is this piece? \_\_\_\_\_
- 42 To which related key has this piece modulated to by bar 8? \_\_\_\_\_
- 43 Describe the harmonic rhythm in bars 1–4. \_\_\_\_\_  
\_\_\_\_\_
- 44 Write an appropriate Roman numeral below the chord on the second beat of bar 4.
- 45 Name the interval between the two notes in the chord marked with an asterisk (\*) in bar 5 (bass part).  
\_\_\_\_\_
- 46 Put a bracket (┌┐) over two places where the treble part is syncopated.
- 47 Circle an accented passing note in bar 4 (treble part).
- 48 What does **Larghetto** mean? \_\_\_\_\_  
\_\_\_\_\_
- 49 In what form is this piece composed? \_\_\_\_\_
- 410 In which bars are there four notes of a chromatic scale put one after another (treble part)?  
\_\_\_\_\_

---

**Section 5 (10 marks)**

---

Outline the major musical developments in Western Classical Music between 1600 and 1900. You must mention specific composers as well.

[illegible]