



Shrewsbury

CO-EDUCATIONAL BOARDING & DAY SCHOOL





“A man - or woman - who dares to waste one hour of time has not discovered the value of life.”



“The staff at Shrewsbury are of rare quality, combining their academic strength with a real desire to teach and develop the pupils.”

Parent

So wrote Charles Darwin, one of Shrewsbury School's most celebrated former pupils. In its broadest sense, the point of school is to discover the value of life. To grow and learn in a supportive but challenging environment, to explore and discover your individual passions and enthusiasms in a vibrant and caring community. To use every minute to the full, whether it is spent in learning, physical activity, socialising or quiet relaxation: every minute matters, just as every individual in the school community matters.

Founded in 1552, Shrewsbury School combines tradition with a vibrant, modern co-educational vision. We are a school with a strong sense of community and a willingness to look beyond our 110 acres and make connections across sectors and around the globe.

On my first visit to Shrewsbury School, I experienced first-hand the rare and special atmosphere of calm purpose that pervades the community here. Girls and boys appeared to be thriving in the beautiful surroundings and a mood of possibility prevailed. Pupils seemed comfortable in their skin and at home with one another. They greeted me with friendly openness and gentle confidence. There was a sense that each moment, each day, was being put to good use and enjoyed to the full.

Shrewsbury School is an 'all-in', 'both-and' school. 'All-in' because we want every individual child to embrace a wide range of opportunities in a community that values participation and the enjoyment of learning. 'Both-and' because we believe that the development of the whole person is best pursued through exposure to a full range of academic challenge, expert pastoral care, a wealth of co-curricular opportunity, rich cultural and intellectual extension and the shared experience of living and learning together.

Our school motto gets to the heart of our educational vision. *Intus Si Recte Ne Labora* – if right within, trouble not. Ours is not a superficial, skin-deep education but one that seeks to develop the whole person. If our values are true, and we live by them with honesty and conviction; if we look beyond the surface of things to question and champion independence of mind; if we learn deeply in order to lead lives of meaning and purpose, we will see the full fruits of a Shrewsbury education.

The choice of the right senior school is as complex as it is important. It is a matter of feeling as much as it is a rational and measured decision. As such, a personal visit is the best way to form a view as to what makes Shrewsbury School so special.

Come and see us to find out more. We look forward to welcoming you.

Leo Winkley – Headmaster









“The most beautiful playing fields in the world, spreading and mingling imperceptibly with the pastureland of Shropshire.”

Sir Neville Cardus, staff member, writer and cricket correspondent

High above a gracious curve of the River Severn, the School occupies a commanding position. Look one way to the heart of the medieval town below; look the other, and the hills of Shropshire remind us that we are in one of the most beautiful parts of England.

This brings many advantages: the grounds are safe and secure; pupils can walk into town in ten minutes when they have free time; the countryside and hills all around offer countless opportunities for walking, canoeing, rock-climbing, field trips and Duke of Edinburgh expeditions; our rowers are at the boathouse in under two minutes.

The school buildings surround the grounds as a village does its green. We are lucky to enjoy wide horizons, immaculate playing fields and well-tended gardens and, like their surroundings, Salopians have the reputation for being open, generous and far-sighted.



“I think Shrewsbury is a place where you can really be yourself and where everyone’s personality has a place.”

Sixth Form girl



Two statues at Shrewsbury sum up our educational philosophy – those of Charles Darwin and Sir Philip Sidney, both former pupils and icons for generations of Salopians.

Sidney – diplomat, courtier, soldier, poet – a man with breadth of vision and ability, symbolises courtesy, compassion and generosity of spirit. Darwin stands for enquiry, dedication and intellectual rigour.

Both combined rare talent with humility and a strong conviction of service to their fellow human beings. This is what we seek to imbue in our pupils.


We will welcome your son or daughter into our community, discover where his or her talents lie, nurture them, and give them the self-confidence to achieve far more than they or you might have thought possible. They may be a specialist like Darwin or an all-rounder like Sidney. We will find out.





*“They encourage you
to be ambitious but
most of all to find the
right thing for you.”*

Pupil



*“Over my five years
at Shrewsbury I
have always felt
that I have been
pushed to the best
of my abilities.”*

Pupil



*“Education is about personal relationships...
the age old themes of the individual and society,
the right to be oneself.”*

Michael Charlesworth (1919-2008)
Secretary of Old Salopian Club

Our pupils achieve such impressive results that some parents believe our intake must be academically highly selective. In fact, we recruit pupils across the ability range. Our Oxbridge entry record, averaging around 15 places a year, places us in the very top bracket of schools nationally. But we are just as proud of the less academic pupils who surpass expectations as we are of those who secure a host of A* grades at A Level.

We believe that education goes way beyond the criteria published by exam boards. Teachers at Shrewsbury are passionate about their subjects. Their enthusiasm, hard work and care for their pupils exceed the call of duty. We want Salopians to learn to think for themselves and grow in independence as they prepare for university and beyond.

The central curriculum is supported by a wide variety of academic and cultural activities. Lectures, debates and art exhibitions complement visits to concerts, plays and galleries. Competitions, essay prizes and academic societies stock the mind, stimulate interest and develop true learning.

Outside the classroom, your son or daughter will have time for real conversation – with friends, teachers, pastoral and support staff. This is education at Shrewsbury.

“This is a ‘happy ship’ and that is due to the lead given by the staff and the caring attitude that is instilled in the pupils.” Parent



There are twelve houses at Shrewsbury: seven boys' houses, and five girls' houses for both boarders and day pupils. They each accommodate about sixty pupils between the ages of 13 and 18. But the houses offer more than accommodation; they are the centre of each pupil's daily life, the very community to which they belong.

The house will be a real home, somewhere to relax and make friends, as well as work. It is a place where each pupil can feel free to be him or herself, where individuals flourish and where the relationship between age groups is natural and easy. Pupils become intensely loyal to their houses and contribute to house activities,

such as sport, drama and music, learning to take responsibility for themselves and others.

The housemaster or housemistress will be a crucial figure, giving sound advice when necessary and encouraging pupils to build a rich and varied life at Shrewsbury. He or she will also be keen to keep in regular contact with you.

The housemaster or housemistress is supported by an assistant, a resident matron and a team of tutors, who will all get to know your son or daughter well. The rapport between the pupils and the men and women who look after them is based on a blend of informality, trust and mutual respect, which we believe is very special to us at Shrewsbury.

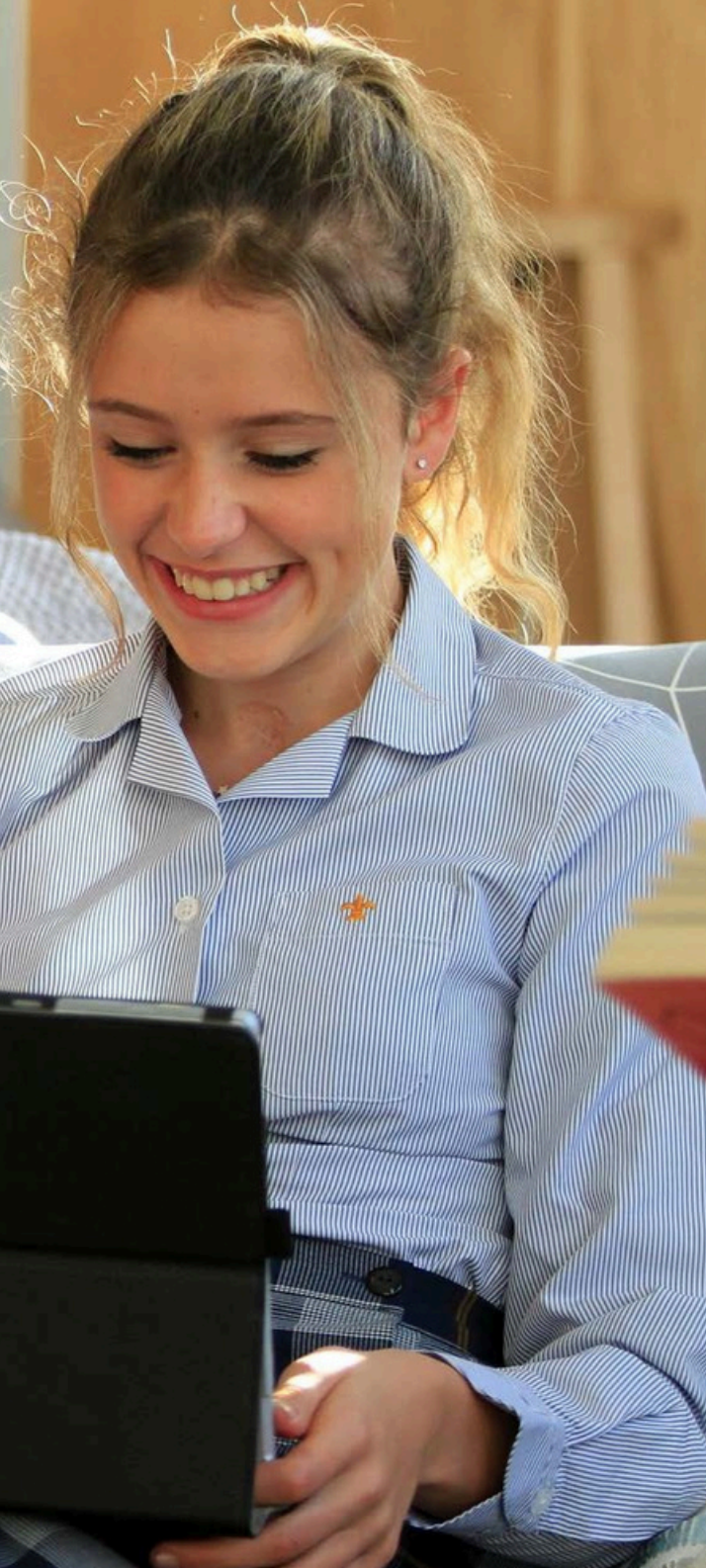




“The pastoral care is exemplary. The staff generate a sense of community which then expands in the mind of every pupil into a personal consideration for the rights of others.”

Parent





Personal Tutoring

When it comes to pastoral care, Shrewsbury strongly believes in the personal touch. During their first three years, all pupils have a personal tutor in their house who looks after them and takes a keen interest in their aspirations and achievements, their progress and any problems they may encounter. Formally and informally, tutors get to know their tutees very well. Your child will receive excellent personal, academic and pastoral support.

Sixth Formers need very particular advice and support in developing personal enthusiasms, making the transition to A level, and selecting the right university and career. With this in mind, we ask each Sixth Former to choose a teacher to be a tutor and personal mentor. He or she will look after your son's or daughter's academic welfare, helping them to develop their abilities and achieve their full potential.

The Chapel

Shrewsbury is a Church of England foundation, and Chapel retains its place at the heart of Salopian life. We believe it is important to look after the spiritual needs of pupils, whatever their religious faith. Here, each week, the whole school spends time, for worship, private prayer, or simply peaceful reflection.

Salopians attend Chapel each Sunday morning and once during the week. They often take a leading role, reading, performing or singing in the flourishing Chapel Choir. Late Sunday evening candle-lit services, when all are relaxed at the end of the weekend, are sometimes held in place of the morning service. The whole community values these occasions, which carry a very special atmosphere of their own.

The School welcomes pupils of all faiths or none, and encourages attendance at appropriate places of worship.

“Back passes to the goalkeeper were my speciality; indeed I scored my only goal this way, a back pass lofted high into the top corner of the net.”

Michael Palin CBE (former pupil, 1957-61)



We are passionate about sport. We are firm in our belief that sport is part of a balanced education and therefore encourage every Salopian to participate at the level that suits them.

Shrewsbury is a leading school in many major sports and our facilities are world class. Salopians compete internationally, particularly in rowing and cricket, and we are one of the strongest football schools in the country. Rugby is also played to a high standard. Every pupil is also introduced to the historic and fast-moving sport of fives in which we excel. We are one of the top schools for boys' and girls' running, gaining national team medals in recent years.

Girls train and compete locally and nationally in hockey, netball, tennis, fives, rowing, lacrosse, cricket and cross-country. Pupils are also able to access a whole host of other sports including fencing, squash, badminton, athletics, swimming and sub-aqua.

Whatever their ability, we want all pupils to enjoy their sport and to be well coached. Many will play in a school or house team and every pupil in their first year is taught by the School's top coaches as part of their weekly curriculum.

Inter-house sport thrives and gives each pupil a chance for a moment of glory. There is no greater joy for us than to see the boy or girl of modest talent score the winning goal – the look of pride on their face says it all. A moment to remember for ever.







*“He has made
some super new
friends, and
seems to be
making the most
of the vast range
of opportunities
available.”*

Grandparent



The following sports are on offer at Shrewsbury:

- Football
- Rugby
- Rowing
- Cricket
- Fives
- Athletics
- Cross-Country
- Hockey
- Netball
- Tennis
- Squash
- Swimming
- Polo
- Golf
- Fencing
- Lacrosse
- Basketball
- Badminton
- Shooting
- Sub-Aqua
- Canoeing
- Kayaking
- Yoga
- Country Sports
- Archery

Some recent sporting successes:

- National U15, U17 and U18 Cricket Champions
- Winners of the Cricket Silk Trophy
- Independent Schools National Football Finalists
- National Schools' Regatta Champions
- National U21, U16, U15, Beginners and Ladies Fives Champions
- Medallists in all National Schools' Cross-Country Competitions
- Girls' 1st XI Cricket Team Champions of The Cricket Paper's National Schools 100 Ball Competition 2021







“The Shrewsbury musical experience is second to none. Every child has the opportunity to enjoy a huge range of musical activities, in one of the best musical facilities in the country.”



The performing and visual arts are a source of inspiration and fun at Shrewsbury and Salopians are always keen to be involved. A wealth of plays, concerts, shows and exhibitions provides the opportunity for pupils to make their own contribution and to experience the excitement of working creatively together.

As one would expect from one of the strongest music departments in the country, the breadth and quality of music-making is remarkable. The focal point is the award-winning Music School, complete with its own concert hall and state-of-the-art recording studio.

Versatility across the whole musical spectrum is strongly encouraged: boys and girls grappling with the complexities of a Shostakovich symphony in Birmingham's Town Hall one week may well be singing evensong in one of the great cathedrals the next, having played in a rock concert in between. Many of our top musicians go on to pursue professional careers, but the School prides itself on providing the richest possible education to musicians of all abilities across a huge range of instruments.

“Shrewsbury School sets new standards for any other musical that wants to brave The Fringe.”The Scotsman



Drama

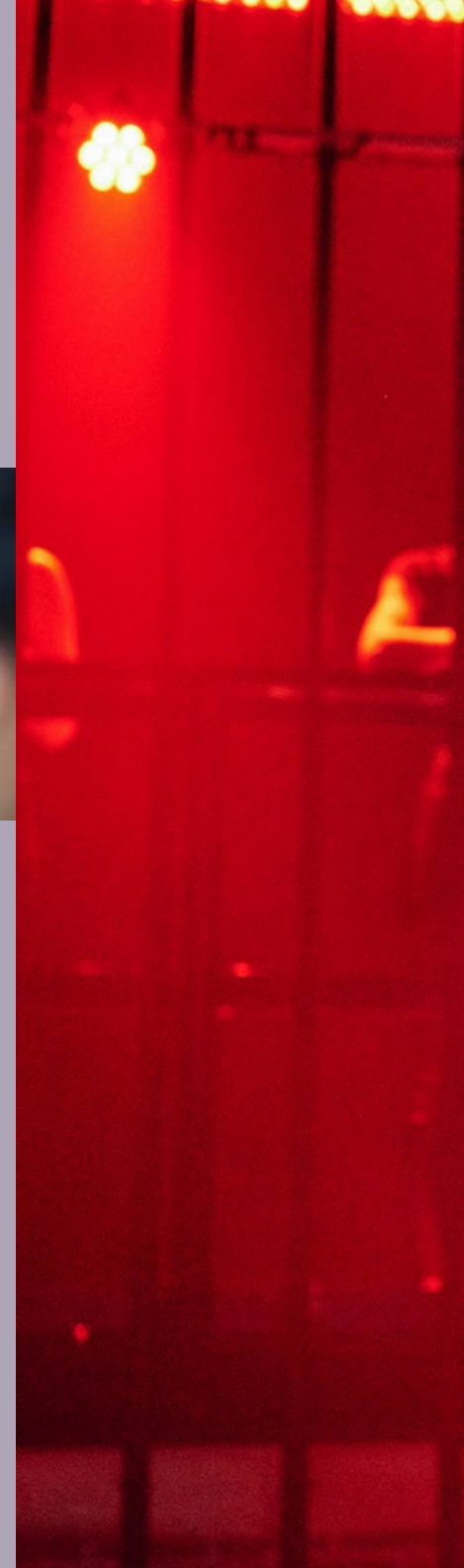
Drama forms a major part of Shrewsbury life. From the outset, boys and girls are encouraged to take part in a varied programme of theatrical activity, including shows devised and directed by themselves. Each year there is a thriving programme of house plays, and two whole-school productions. We have a fine tradition of innovative music theatre, written and composed by members of staff - and we regularly take our shows to the Edinburgh Fringe.



Visual Arts

The Art School is an ideal space for creative work with many large and light studios, two galleries for exhibitions, a History of Art lecture room, a dark room and a ceramics room. All pupils study Art in their first year, and beyond GCSE Art, three separate A levels are on offer: Painting and Drawing; History of Art; Photography. The Art School hosts a continuous programme of exhibitions by professional artists as well as by our most talented pupils.

There are numerous trips to galleries and museums - within this country, across Europe and in America.









*“Four years to the day after leaving home,
I crossed the Bosphorus once more. I had
made it around the world.”*

Alistair Humphreys (former pupil, 1990-95) Round-the-world cyclist,
author and motivational speaker. National Geographic Adventurer of the Year 2012.

Education should never end in a classroom. Your son or daughter will be introduced to extra-curricular activities that will often become a life-long passion. From bee-keeping to Model United Nations, from creative writing to robotics, a vast range of interests and enthusiasms are also catered for through our many societies and clubs. Our thriving CCF and Duke of Edinburgh programmes exploit to the full our enviable geographical location within easy reach of Snowdonia, the Lake District, the Brecon Beacons and the Long Mynd. A vast range of other interests and enthusiasms are also catered for through our many societies and clubs.

Sports, music and art tours, study visits and adventure training take Salopians to all parts of the globe.

An impressive array of weekend activities includes theatre and cinema trips, concerts, go-karting, paint-balling, trips to sports matches, shopping trips to Birmingham and quizzes.

For the past 40 years parties of Salopians have visited the School's farmhouse at Talargerwyn, high up in a remote forest in Snowdonia. Well placed for hill walking or for beach football at Harlech, 'Tally' is greatly in demand at weekends, providing a retreat from the often frantic pace of school life.



“My deep social conscience was fostered at Shrewsbury by trips to Shrewsbury House in Everton; experiences that have never left me.”

Jonathan Crown (former pupil, 1977-82) Founder of Project Harar Ethiopia



We want Salopians to be outward-looking, thoughtful and compassionate. Many volunteer for weekly community service, offering company and conversation at local residential care homes, carrying out conservation work, or helping children in a local primary school.

More than a century after its foundation, Shrewsbury House, a youth club founded by the School in a deprived area of Liverpool, is still going strong. Residential visits to the club often have a lasting effect on the social outlook of our Sixth Formers. In return, every summer the School welcomes a large party of Everton teenagers to strengthen the bond between the two communities.

We have strong links with Shrewsbury International School in Bangkok, founded in 2004. In response to increasing demand for places, it opened a new primary school in the centre of the city in 2018.

Our long-established link with Hong Kong has been affirmed with the opening of an international primary school there, also in 2018. Exchange programmes, musical collaborations and gap-year placements give our pupils valuable insights into life in a region that will play an increasingly important role in world affairs.

Without realising it perhaps, you will read or hear about our former pupils every day. In every walk of life - business, the professions, politics, the arts, the media and sport - Old Salopians have made their mark and will continue to do so.

Shrewsbury will provide your son or daughter with expert advice on the crucial steps after school to university and beyond. Our Careers staff have an exceptional knowledge of Higher Education and offer the most careful and comprehensive guidance on work experience and employability.





*“I would like to thank the
staff at Shrewsbury for
‘lighting the flame’”*

Adam Booth (former pupil, 1995-2000)
Climbed Everest in May 2018 and May 2013 -
the seventh former pupil to reach the summit
or climb within 800 metres of it, the first being
Sandy Irvine in 1924

“The ideal is to preserve a sane balance between work and play, to play just as hard as you work.”

Robert Tisdall (former pupil, 1921-26) 1932 Olympic Gold Medal Winner, 400 metre hurdles



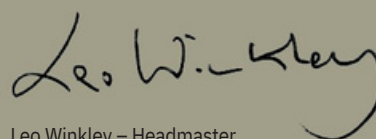
This prospectus embodies our understanding of Shrewsbury. It is a remarkable place inspirationally influenced, over so many years, by remarkable people.

The great figures of the past will always resonate in Salopian history. Yet their greatness lies not so much in their individuality as in the principles they exemplify, which continue to inform our minds and ways and lead us to place notions of humanity, compassion, worthy exploration, true excellence and high achievement at the centre of our lives.

These remain the values on which our vision for Salopian education is founded.

If you share our vision, we invite you to come to Shrewsbury to meet the pupils and the staff who work here, and find out more about us.

A warm and personal welcome awaits you.



Leo Winkley – Headmaster



“This school has given me so many opportunities to show my colours and drive myself to my own limits. And for that I am forever grateful.”

Sixth Form boy





Shrewsbury
School

The Schools, Shrewsbury, SY3 7BA Tel: 01743 280 552 Email: admissions@shrewsbury.org.uk
www.shrewsbury.org.uk