

Surname:

First Name:

Current School:



**Shrewsbury
School**

SHREWSBURY SCHOOL

SIXTH FORM ENTRANCE EXAMINATION 2024 ENTRY

MUSIC (1 Hour)

Instructions to candidates:

Answer all questions, writing your answers in the spaces provided. The number of marks for each question is shown in brackets ().

Section 1 (10 marks)

Put a tick (✓) in the box next to the correct answer.

Example

Name this note:



A ☐ D ☐ C ☒

This shows that you think C is the correct answer.

1.1 Name the circled note:



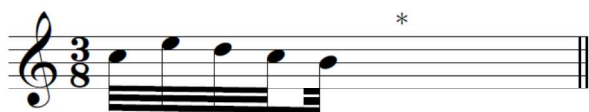
Ab ☐ Eb ☐ G ☐

1.2 Which is the correct time signature?



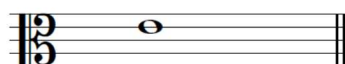
$\frac{3}{2}$ ☐ $\frac{4}{2}$ ☐ $\frac{6}{4}$ ☐

1.3 Which rest(s) should be put below the asterisk (*) to complete the bar?



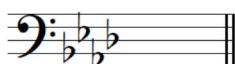
$\frac{3}{8}$ ☐ $\frac{4}{8}$ ☐ $\frac{6}{8}$ ☐

1.4 Which note is the enharmonic equivalent of this note?



Fbb ☐ Dx ☐ D# ☐

1.5 Which note is the supertonic of the minor key shown by this key signature?



Bb ☐ Gb ☐ G ☐

Put a tick (✓) in the box next to the correct answer.

1.6 Which note is the dominant of the major key shown by this key signature?



A ☐ E ☐ D ☐

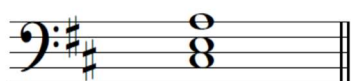
1.7 *morendo* means:

hushed ☐ softly ☐ dying away ☐

1.8 Which of these ornaments should be played as follows?



1.9 Which Roman numeral fits below this dominant chord?



V ☐ vb ☐ Vb ☐

1.10 Name this chord progression in E minor.



I-V ☐
ii°b-V ☐
ii-v ☐

Section 2 (15 marks)

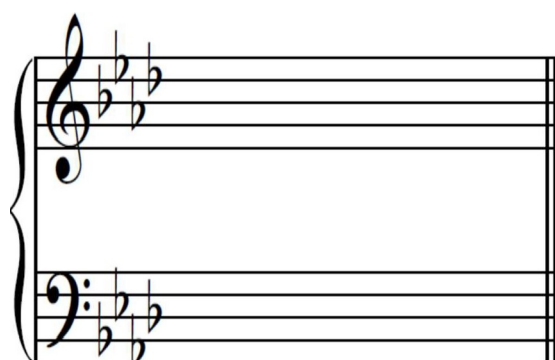
2.1 Transpose this melody up a perfect 4th. Use a key signature.

Chabrier



Section 3 (15 marks)

3.1 Using minims, write out 4-part chords for SATB using the chords shown by the Roman numerals below.



(F minor)

Vc



(D major)

IVb

Section 4 (20 marks)

Look at the following piece and answer the questions opposite.

Mozart

Larghetto

Measures 1-4 of the musical score. The key signature has three flats (B-flat, E-flat, A-flat) and the time signature is 4/4. The tempo is marked **Larghetto**. The piece begins with a piano (*p*) dynamic. The right hand features a melody with eighth and sixteenth notes, including a trill (*tr*) in measure 4. The left hand plays a steady eighth-note accompaniment. Dynamic markings include *p* in measure 1 and *fp fp* in measure 4.

Measures 5-8 of the musical score. Measure 5 is marked with a '5'. The right hand continues the melodic line. The left hand accompaniment is marked with *cresc.* (crescendo) and *p* (piano). A double bar line with repeat dots appears at the end of measure 8. A small asterisk (*) is placed below the left hand staff in measure 6.

Measures 9-12 of the musical score. Measure 9 is marked with a '9'. The right hand features a melodic phrase with a dashed slur over measures 9 and 10. The left hand accompaniment is marked with *f* (forte) in measure 9 and *p* (piano) in measure 12. A double bar line with repeat dots appears at the end of measure 12.

Measures 13-16 of the musical score. Measure 13 is marked with a '13'. The right hand continues the melodic line. The left hand accompaniment is marked with *f* (forte) in measure 13 and *p* (piano) in measure 14. A dashed slur is present over the right hand staff in measure 16. A double bar line with repeat dots appears at the end of measure 16.

41 In which key is this piece? _____

42 To which related key has this piece modulated to by bar 8? _____

43 Describe the harmonic rhythm in bars 1–4. _____

44 Write an appropriate Roman numeral below the chord on the second beat of bar 4.

45 Name the interval between the two notes in the chord marked with an asterisk (*) in bar 5 (bass part).

46 Put a bracket (┌┐) over two places where the treble part is syncopated.

47 Circle an accented passing note in bar 4 (treble part).

48 What does **Larghetto** mean? _____

49 In what form is this piece composed? _____

410 In which bars are there four notes of a chromatic scale put one after another (treble part)?

Section 5 (10 marks)

Outline the major musical developments in Western Classical Music between 1600 and 1900. You must mention specific composers as well.

[illegible]